

Building a Guide

to

Inclusive, Equitable & Effective Implementation of BIODIVERSITY TARGET 3

Supported by:



Led by:



Implemented by:



In partnership with

UK DEFRA

Department for Environment,
Food and Rural Affairs

The Nature
Conservancy

nature.org



CEESP

...with more to come!

WCPA Mandate (2021-2024)

Mission

To develop and provide scientific, technical and policy advice and advocate for global and national systems of marine, freshwater and terrestrial protected areas and other effective area-based conservation measures (OECMs) that result in successful outcomes for the conservation of biodiversity, based on principles of sound design, good management, and equitable governance.

The Guide

- A guide for countries to develop an inclusive and effective plan to meet or exceed GBF Target 3
- A compendium of existing guidance, with new guidance on a list of challenging issues
- Informed by growing experience in practice
- Move from what *should* be done to *how* to do it

> 60 pages, inclusive of annexes <

INCLUSIVE !!

1. Implementation of Target 3 should be inclusive
2. Inclusive in its development, through open, wide, transparent consultation
3. Final product viewed as having been inclusive

Editorial team




Equilibrium
RESEARCH



- Recruit, coordinate, collect and synthesize input from a wide variety of sources,
 - including formal expert and stakeholder consultation meetings, staff of partner and other organizations, all levels of WCPA, information from conferences and negotiations, and existing guidance.
- Manage leads for consultations about specific topics of the Guide, drawn (mostly) from the extensive network of WCPA.
- Seek advice from the Advisory Group, and document decisions about what input received through wide consultation ultimately ends up in the 60-page guide, and why.
- Manage contractors on design, translation and other needs of the publication.

Gender and Indigenous / Community Expertise

- Gender
 - Ana Di Pangracio
 - Environmental lawyer, IUCN Councilor, CBD Women's Caucus, Women4Biodiversity
- Governance, Equity and Rights
 - Jessica Campese (with Helen Tugendhat)
 - CEESP, ICCA Consortium, social science

- 
- Climate Change
 - Connectivity Conservation
 - Cultural and Spiritual Values of Protected Areas
 - Freshwater
 - Geoheritage and Cave and Karst Protected Areas
 - Governance, Equity and Rights
 - Management Effectiveness
 - High Seas

WCPA Specialist Groups (18)

- Health and Well-being
- Mountains
- OECMs
- Privately Protected Areas
- Sustainable Finance
- Temperate Grasslands
- Tourism and Protected Areas
- Transboundary Conservation
- Urban Conservation Strategies
- Wilderness

WCPA Regions

Oceania

Lou Sanson

Southeast Asia

Amran Hamzah

Agus Utomo

Neil Aldrin

South Asia

Sonali Ghosh

East Asia

Yoshitaka Kumagai

Lu Cai

North Eurasia

Tanya Rosen

*Mikhail Oblakov, Shirin
Karryeva*

**North Africa, West Asia,
Middle East**

Nizar Hani

Europe

Erika Stanciu

West and Central Africa

Florence Palla

**East and Southern
Africa**

Sabelo Lindani

South America

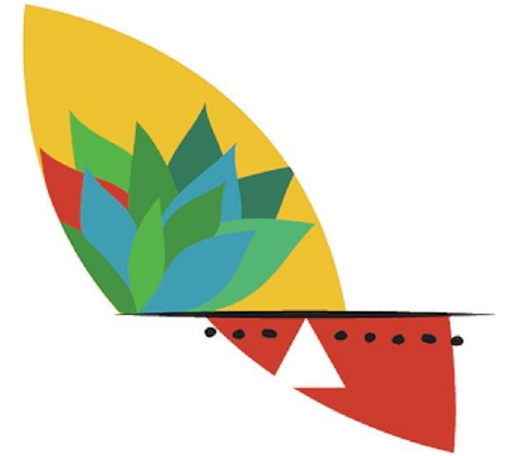
Paula Bueno

**Caribbean and Central
America**

Alan Valverde

North America

Mike Wong



World Commission
on Environmental Law

Commission Mondiale de
Droit de l'Environnement | Comisión Mundial
de Derecho Ambiental



Coming soon:
Climate
Crisis
Commission



Preview

This briefing is a taster for a **more complete guide**, to be published in mid-2023. This guide will have:

- Overarching guidance on developing a blueprint for implementation of Target 3
- Succinct text, presented in an accessible form with hotlinks to further information
- Infographics, explaining what the target implies, and giving steps towards implementation
- Stories – case studies (or hotlinks to longer studies) that illustrate how 30x30 can be tackled
- Links to available guidance, learning opportunities, prioritizations and tools – good practice

Implementing Target 3 of the Global Biodiversity Framework

Encouraging an *inclusive* and *effective* approach to supporting and establishing protected and conserved areas over 30% of land, inland waters and ocean



Background: The Global Biodiversity Framework (GBF) is being negotiated under the Convention on Biological Diversity (CBD). Although wording remains under discussion, key elements of Target 3 are likely to include *at least 30 per cent globally of land areas and of sea areas ... especially areas of particular importance for biodiversity and its contributions to people ... effectively managed and equitably governed ... ecologically representative and well-connected systems of protected areas and other effective area-based conservation measures ... integrated into wider landscapes and seascapes*. Over one hundred governments have already agreed to a target of 30% of land and ocean in protected areas and other effective area-based conservation measures (OECMs) by 2030 (30x30), giving it considerable momentum.



This briefing is aimed primarily at providing guidance on initiating action towards planning and implementation of 30x30.

What does the 30x30 target mean in practice?

- The 30% target covers terrestrial, inland waters and coastal and marine ecosystems.
- It involves only protected areas (as defined by the CBD and IUCN, and including all IUCN categories) and OECMs.
- It is a global target, not all countries will meet 30% but this assumes others exceed 30%
- The focus is on “*areas of particular importance to biodiversity*”
- ...and “*places important to people*,” e.g., supplying ecosystem services or of cultural significance.
- The global system should include ecologically viable examples of all ecosystems
- ...and be connected to retain genetically viable species and help adaptation to climate change.
- Management and governance should be effective at delivering conservation outcomes.
- Designation, governance and management should be equitable, respecting and supporting the rights of customary and legal rightsholders and the contributions of rightsholders and stakeholders.
- Protected areas and OECMs must be integrated into wider landscapes and seascapes to increase sustainability of the whole planet.



Consultations

- Three stages
 - General
 - Sectoral
 - Detailed
- All coordinated by the writing team
 - with different actors assisting to identify, recruit, engage wide range of interests and perspectives in the consultation processes

Graphical, easy to understand



30% means **globally**

30%

of both



&



especially
BIODIVERSITY
rich areas



areas important
to **PEOPLE**



2 types of areas
count towards
the target



**PROTECTED
AREAS**




**OTHER EFFECTIVE
AREA BASED
CONSERVATION
MEASURES**

The importance of Quantity AND Quality

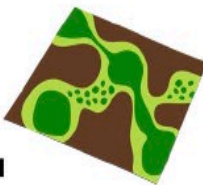


The target must address

1. 
importance for
biodiversity

2. 
contributions
to people

3. 
ecologically
representative

4. 
well-connected
systems

5. 
effectively
managed

6. 
equitably established
and managed

7. 
integrated into the wider
landscapes and seascapes

This graphic is based on wording for Target 3 in the First Draft of the GBF text, released 5 July 2021

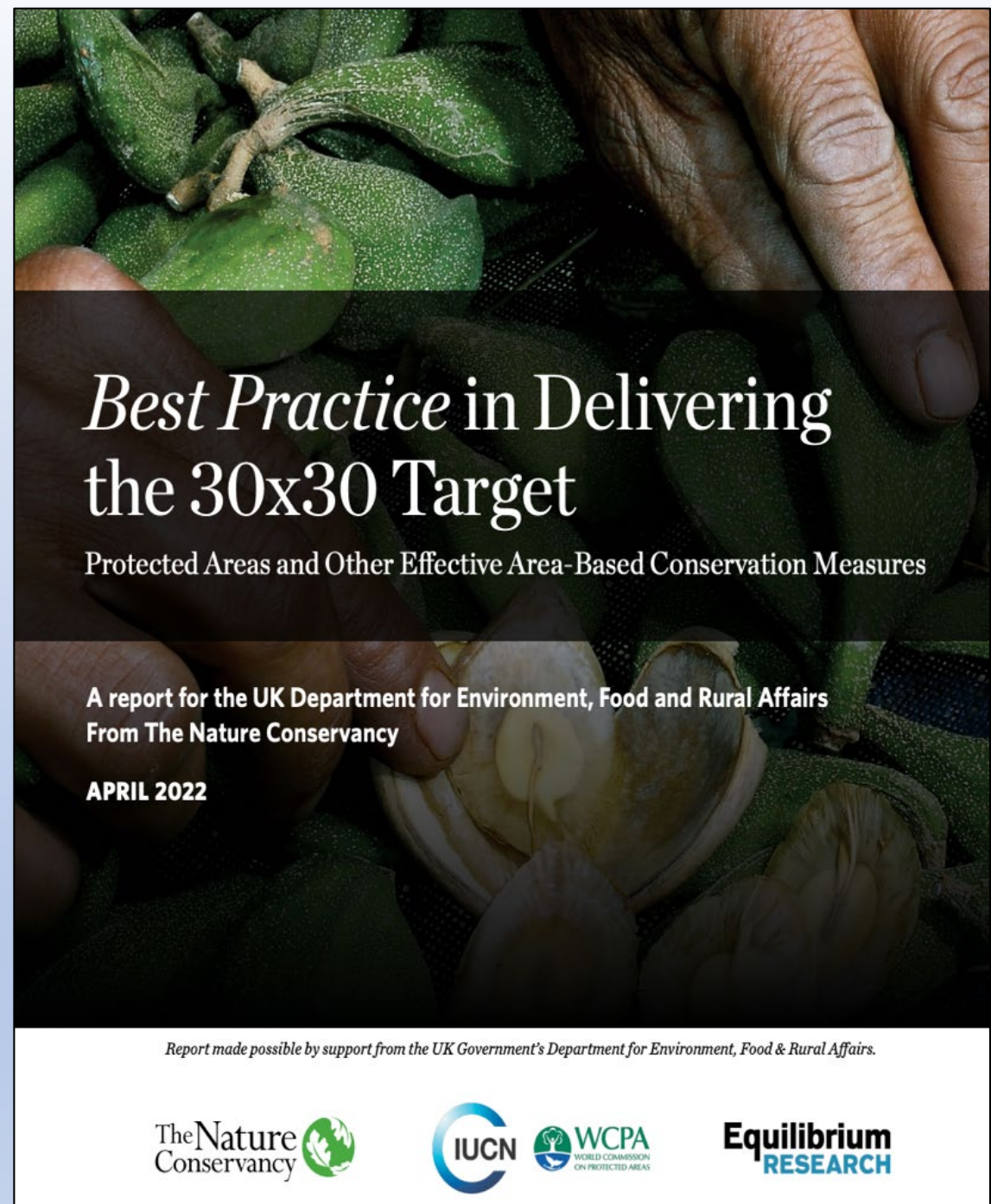
Making PCAs work for biodiversity and for people

The challenge is implementation – regardless of the scale of the target.

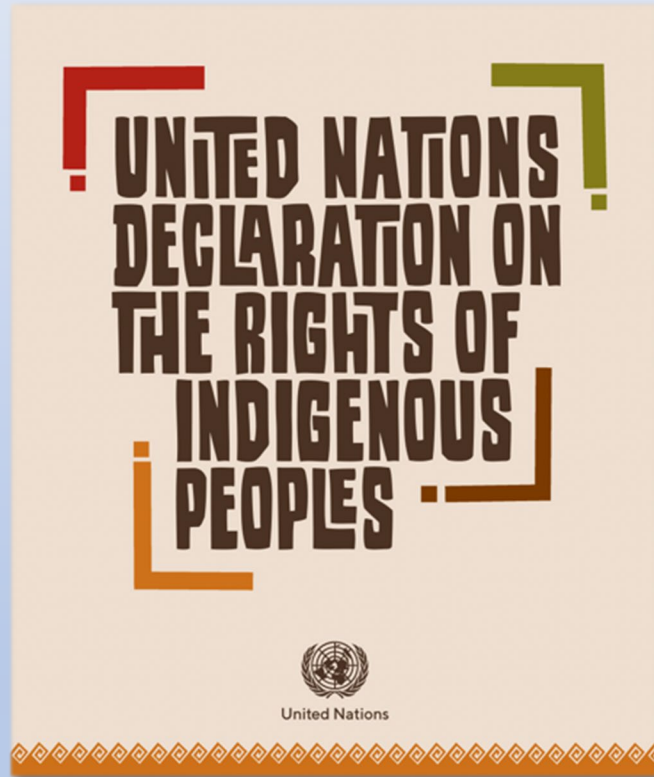
Need to build on global best practices for area-based conservation

PCAs can work for biodiversity and for people

Importance of monitoring conservation and social outcomes



Free Prior and Informed Consent



[Both] Indigenous peoples and local communities: custodians of their lands, waters, and territories.

Governments: responsibility to engage in consultative processes, including free, prior and informed consent processes,

- what each form of recognition implies in terms of decision-making, management and other responsibilities
- what forms of support are available

Securing and enhancing the rights and self-determination of Indigenous Peoples and communities with collective tenure and governance systems

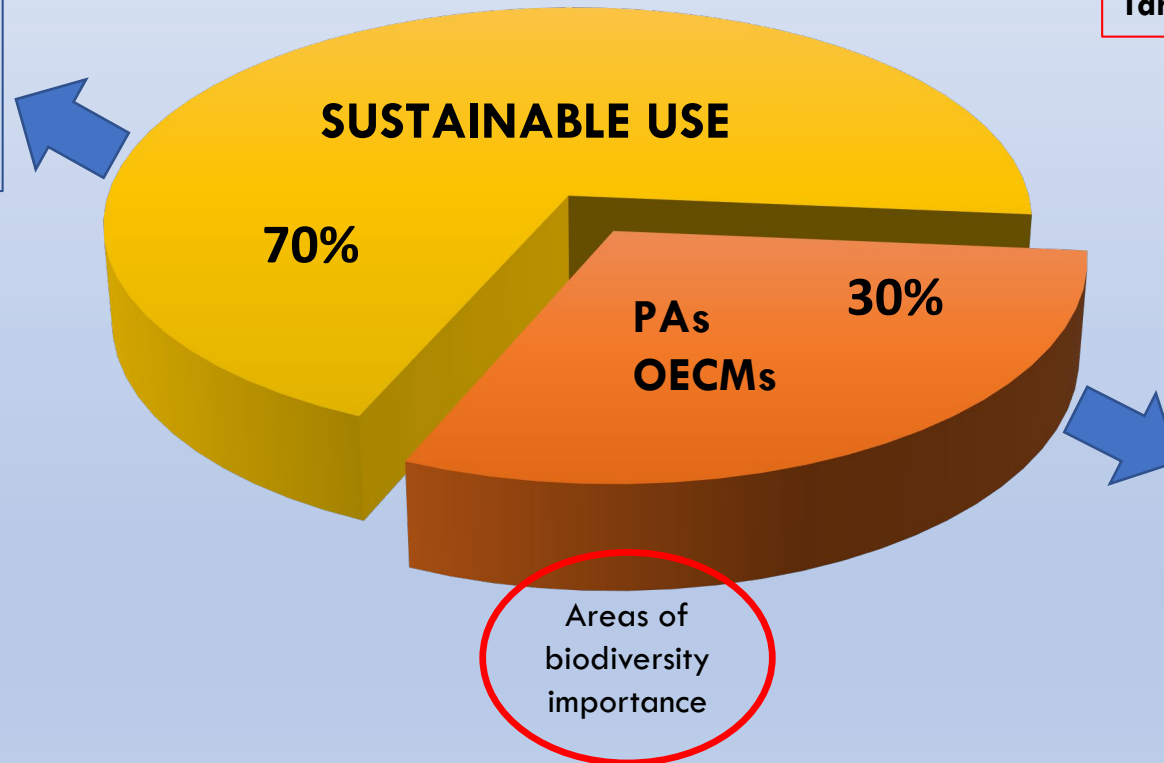
Effective



Target 3 in perspective

Target 5

Production landscapes
Commercial Fisheries
Commercial logging areas
Agricultural plantations



GBF= 21 Targets

Target 1 - Spatial Planning

Target 2 - Restoration

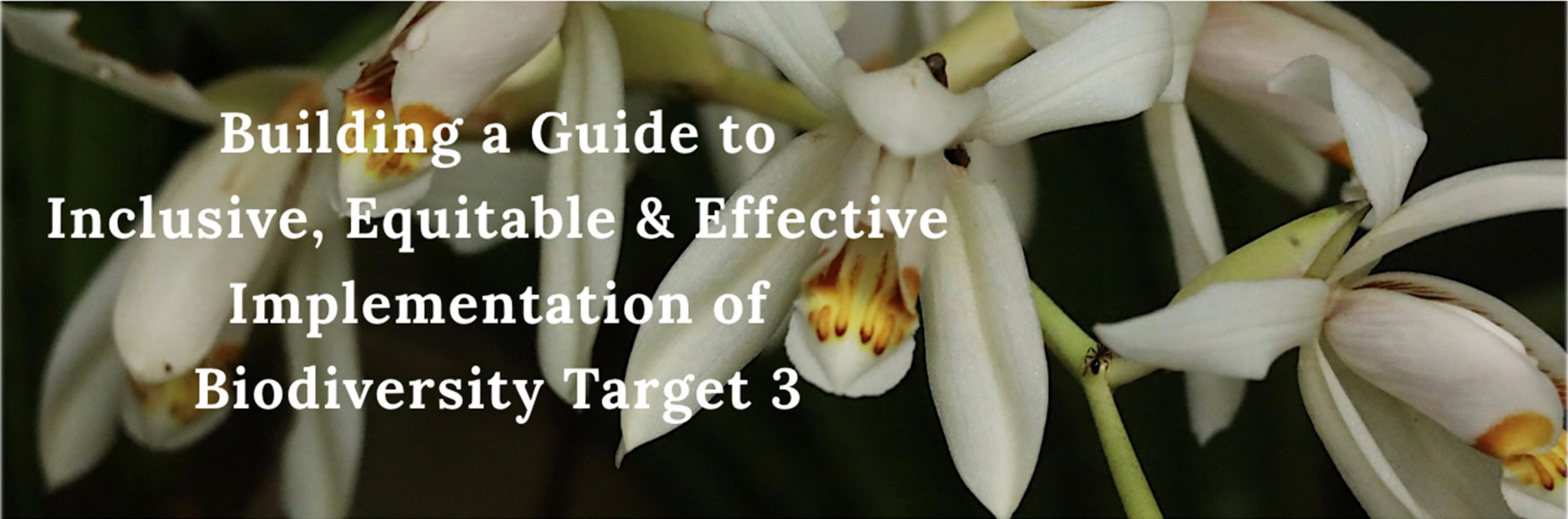
Target 4 - Wildlife exploitation

Target 5 - Sustainable use

Target 20 - Indigenous knowledge systems

Target 3

Government PAs
Territories of Life / ICCAs
Privately Protected Areas
Shared governance
OECMs



Building a Guide to Inclusive, Equitable & Effective Implementation of Biodiversity Target 3

Illuminating a path to 30x30

Nations of the world are expected to agree an ambitious plan to reverse nature loss, the Global Biodiversity Framework, in December 2022.

Among 21 draft targets is #3, to conserve 30% of the planet by 2030.



30x30 Solutions

[Home](#) [Get involved!](#) [COP15 Resources](#)

i - Solusi 30x30 - 30x30 Solutions - Solução

Timing

Now – general and sectoral consultations

Mid-February – crafting/drafting

March/April – draft consultations

Summer 2023 – Final (GEF meeting)

Followed by...

Translations to French and Spanish

Aspiration

Give tools to the people
charged with making a
difference



Thank you!

T3Guide@oldtownhill.org



**Vice Chair,
Scaling Natural Solutions**

National Park Service
Stewardship
INSTITUTE



Partner, NPS Stewardship Institute
[NPS.gov/StewardshipInstitute](https://www.nps.gov/StewardshipInstitute)



Senior V.P., Stewardship
QLF Atlantic Center for the Environment

brentmitchell@qlf.org