

Dr Caroline Lehmann
clehmann@rbge.org.uk
@Caroaceae



**Royal
Botanic Garden
Edinburgh**





OpEN – The Open Ecosystems Network

OpEN aims to foster understanding of the value of open ecosystems among policymakers and the public. Drawing on examples and expertise of 100+ affiliated scientists, the evidence provided highlights their integral contributions to the Earth system, global biodiversity, communities and cultures.

OpEN Steering committee



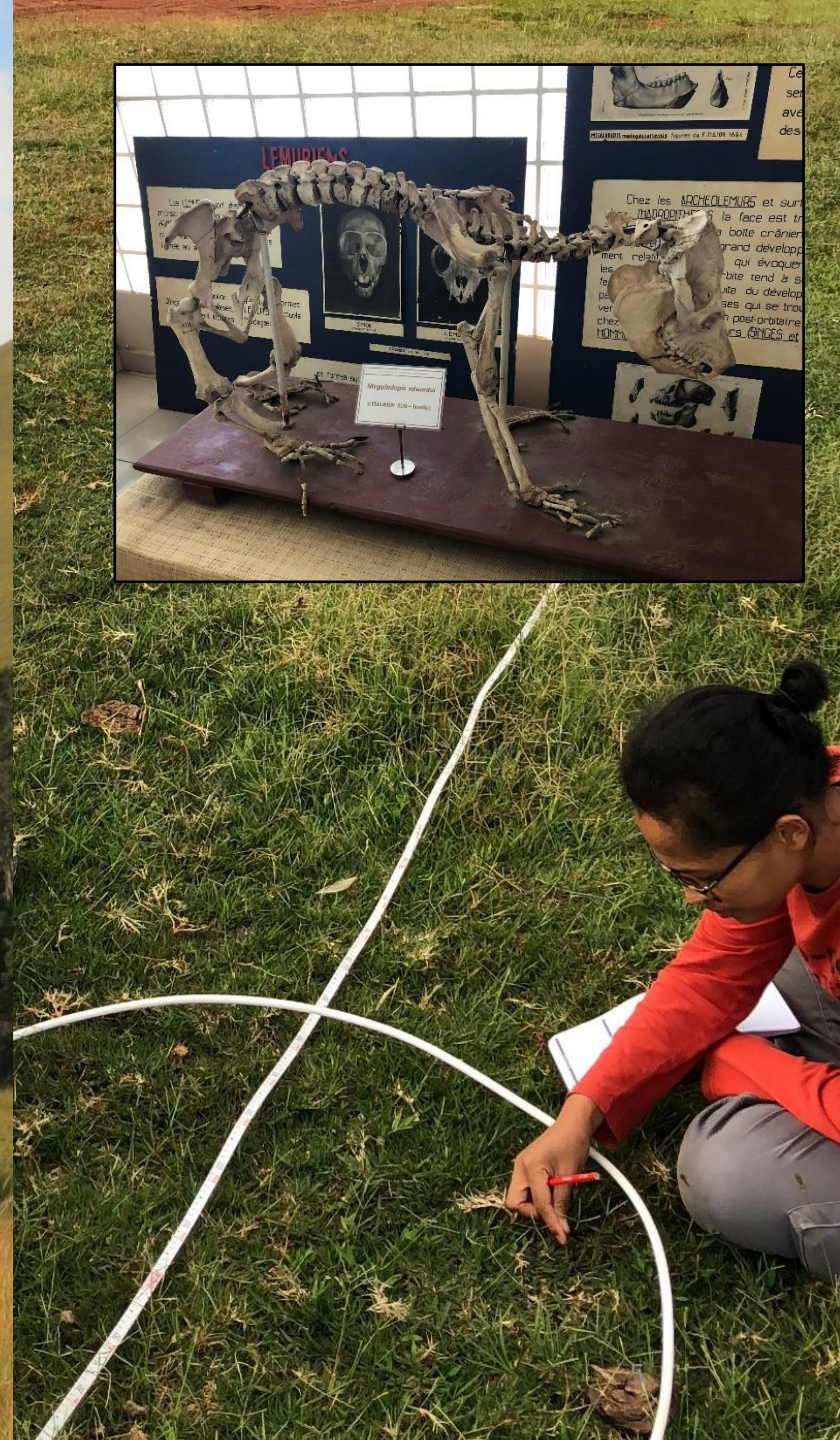
- Caroline Lehmann
 - Forrest Fleischman
 - Catherine Parr
 - Natashi Pilon
 - Rose Pritchard
 - Jayashree Ratnam
 - Vicky Temperton
 - Joseph Veldman
 - Yadvinder Malhi
 - Anya Courtenay (secretariat)
-
- Looking for participation from the Eurasian and African regions
 - Please get in touch to discuss



Open ecosystems are threatened

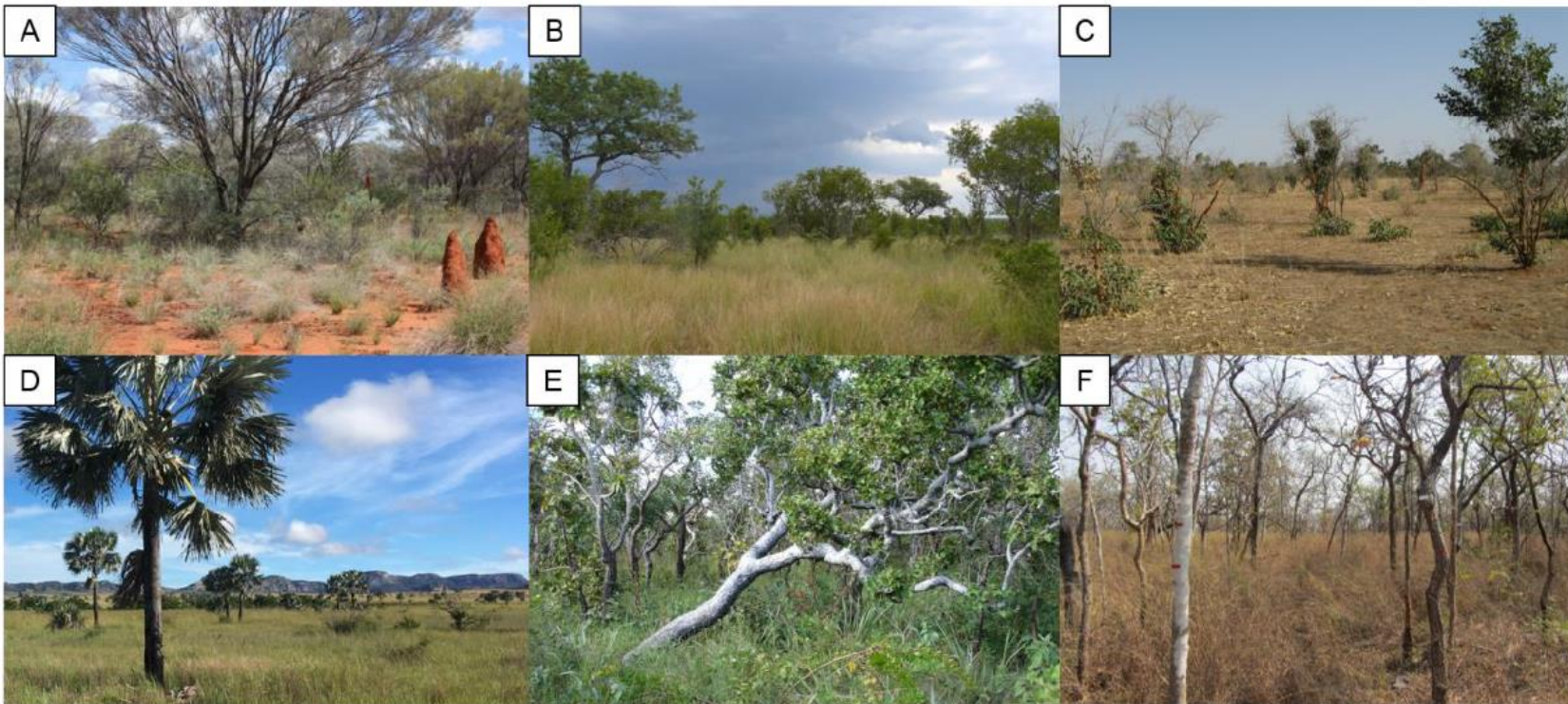
Open ecosystems suffer disproportionately from prevailing Eurocentric and forest-centric perspective on how ecosystems, their assembly and dynamics are understood. As a result of this outlook and without dense tree cover, many open ecosystems are considered degraded vegetation as a product of anthropogenic actions.

Madagascar: wasteland or wonderland?



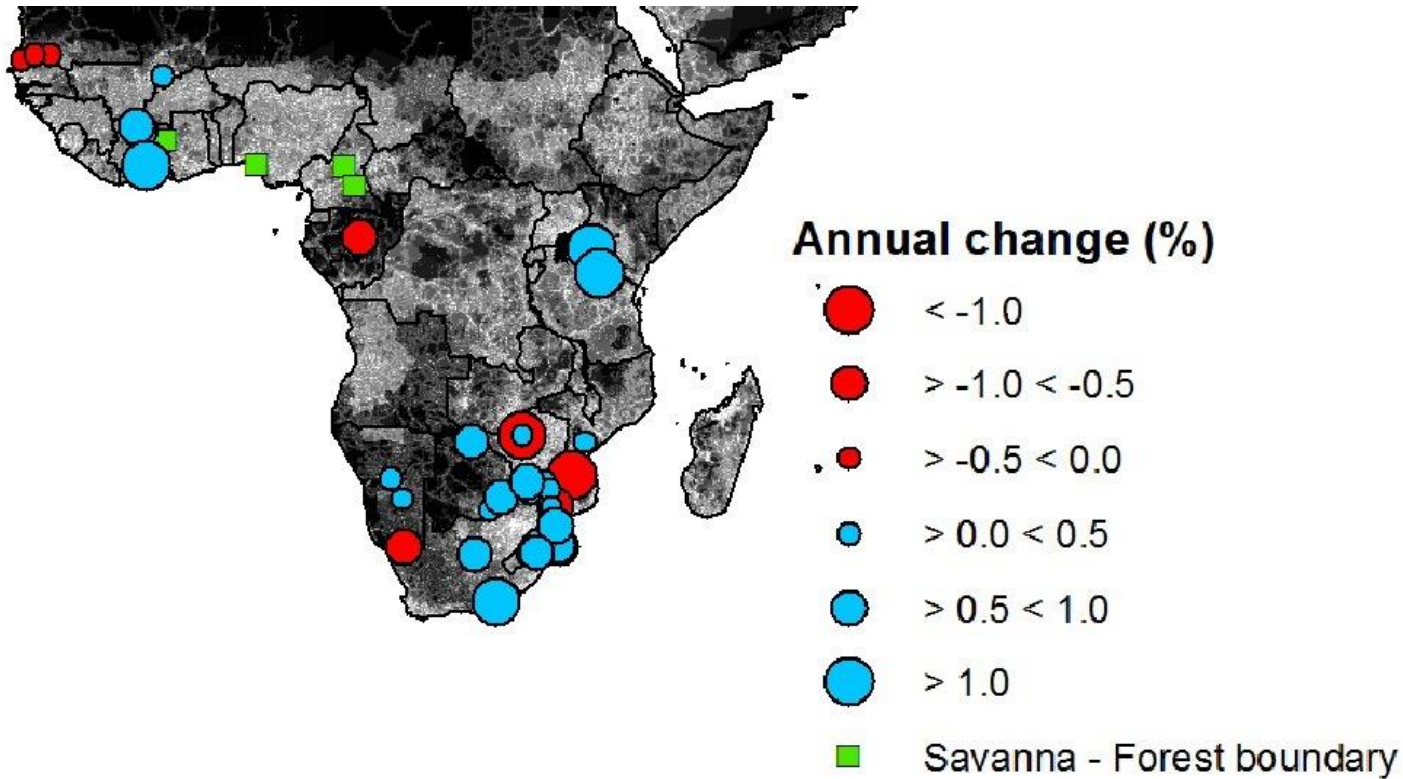
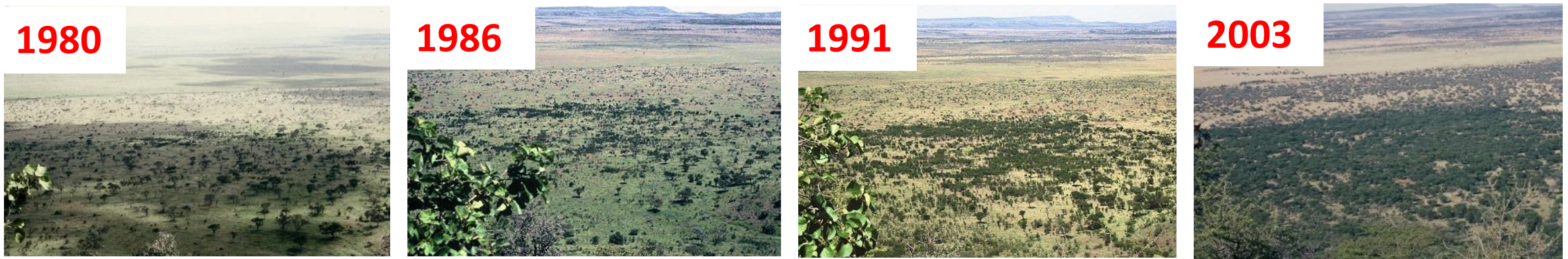
Climate and biodiversity crisis: valuing ecosystems equally

- Tree centric policies for land and biodiversity
- Ecological NOT economic definitions of ecosystems
- Restoration and degradation are value laden terms



<<< Forest????



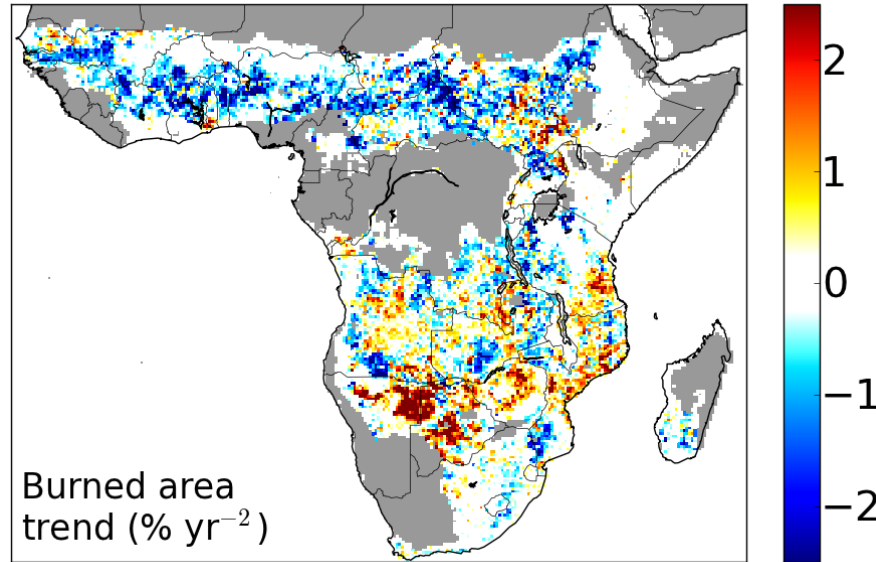


**Open ecosystems are
undergoing radical change**

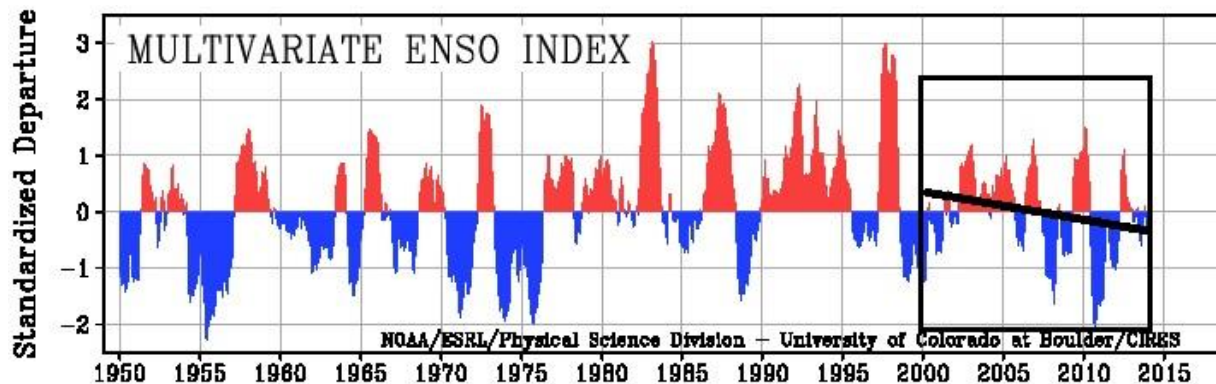
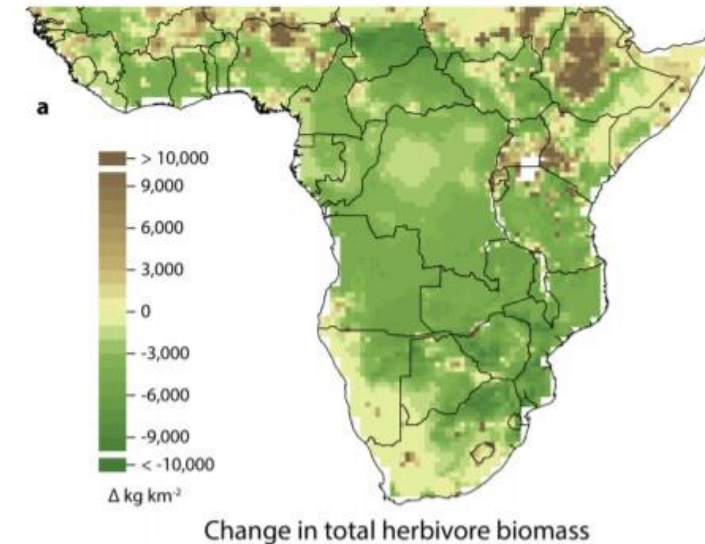
**How and where will open
ecosystems change in the
future? And, why?**

Global change is complex and rapid – shifting baselines

Fire management and climate change



Megafaunal extinctions & livestock



Hempson *et al.* (2016)
Andela *et al.* (2014)



Website – platform for public and policy engagement

- Working principles
- Affiliates – contacts and expertise
- Case studies of Open Ecosystems – 300 word summaries of varied open ecosystems written by affiliates
- Open access data base of land management interventions – the good, the bad and in between
- Fact checking for the public and policy



Fact checking and dispelling myths

- > Summaries crowd sourced by the OpEN community
- > Represents most up to date natural and social science understanding of open ecosystems
- > Written for the public and policy makers – accessible language across points for many themes:
 - Biodiversity
 - Carbon
 - Water
 - People, land and justice
 - Environmental risk
 - Climate change
 - Restoration
 - Terminology/Jargon



Outcomes for 2022

- Developing the network of affiliated researchers
- Formal OpEN web and network launch alongside publication
- Horizon scan of research based on OpEN member contributions to be published in *Trends in Ecology and Evolution* >> *collective authorship to represent the community*
- Open access database of land management interventions
 - Working towards a traffic light system of appropriate land management interventions for restoration cognisant of ecology and culture
 - Move beyond “right tree right place”



OpEN – The Open Ecosystems Network

Sign up as an affiliate:

<https://docs.google.com/forms/d/e/1FAIpQLSfd3Tac9ViW9YhMzvRwjbxXU0j6I9t2dNTz7Ab-E7C6TSurcQ/viewform>

Join on website, be added to our mailing list and contribute as possible to website, databases and publications