

An international network of researchers, producers, advisors and local experts ...



... analysing agricultural production systems, their economics, framework conditions and perspectives globally.

agri benchmark

– a unique global network

- An **expert network** which started 20 years ago
- **Global, non-profit, independent**
- **Standardised methods**
→ global comparability
- One approach for **six branches in more than 60 countries**



Beef, Sheep, Pig



Horticulture



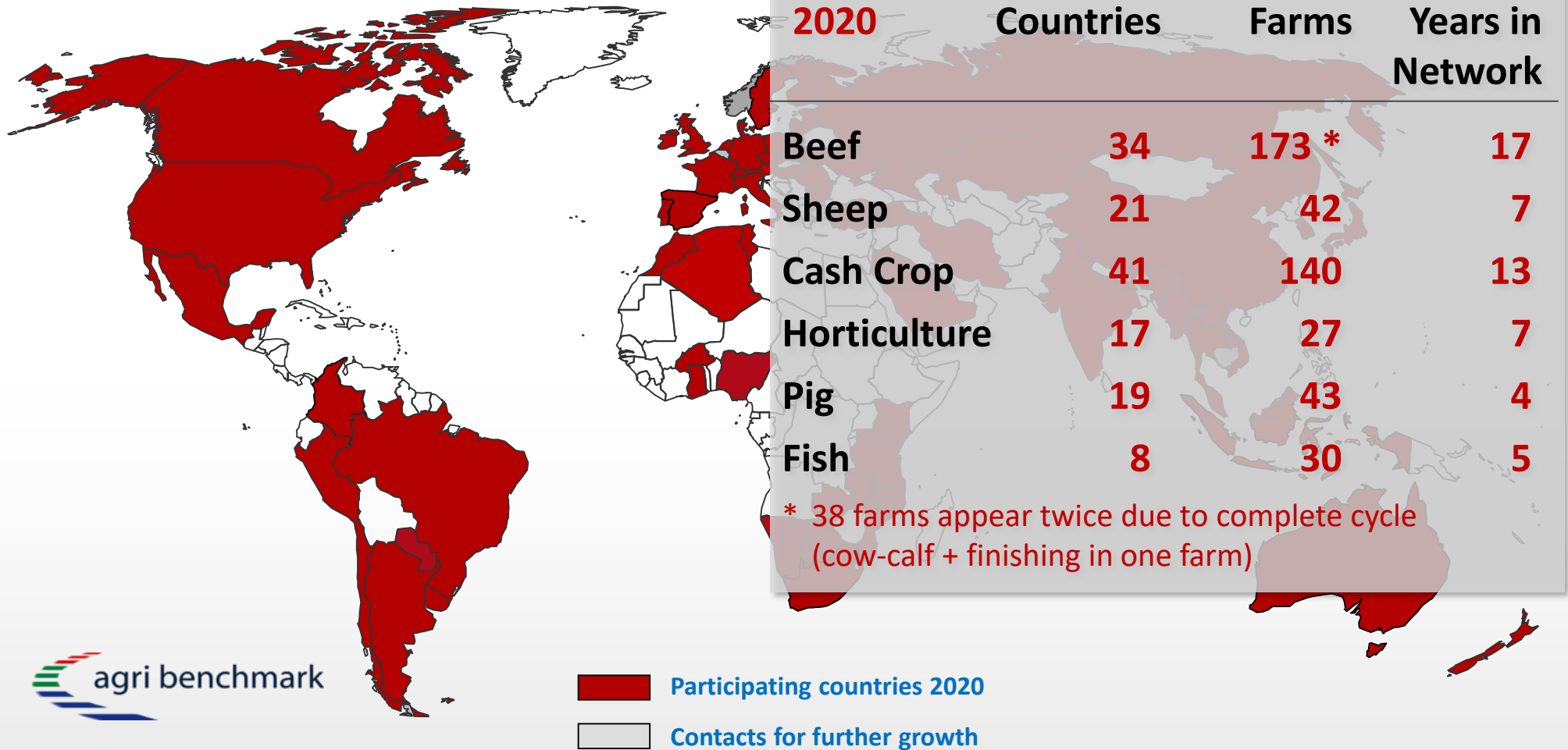
Aquaculture



Crops



We harvest data around the world.



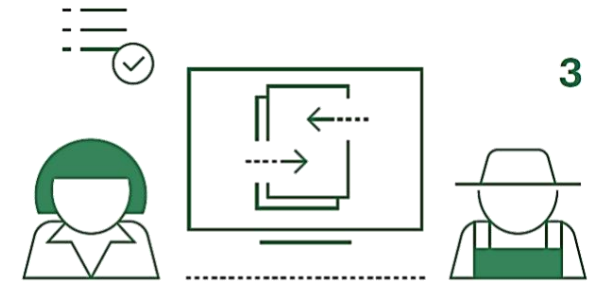
agri benchmark's Standard Operating Procedure (SOP) to define typical farms.



Identification
LOCAL SCIENTISTS



Data collection
LOCAL SCIENTISTS, ADVISERS, FARMERS



Processing and cross-checking
LOCAL SCIENTISTS



Validate and publish results to partners and clients
LOCAL SCIENTISTS, SCIENTISTS AT
AGRI BENCHMARK CENTER



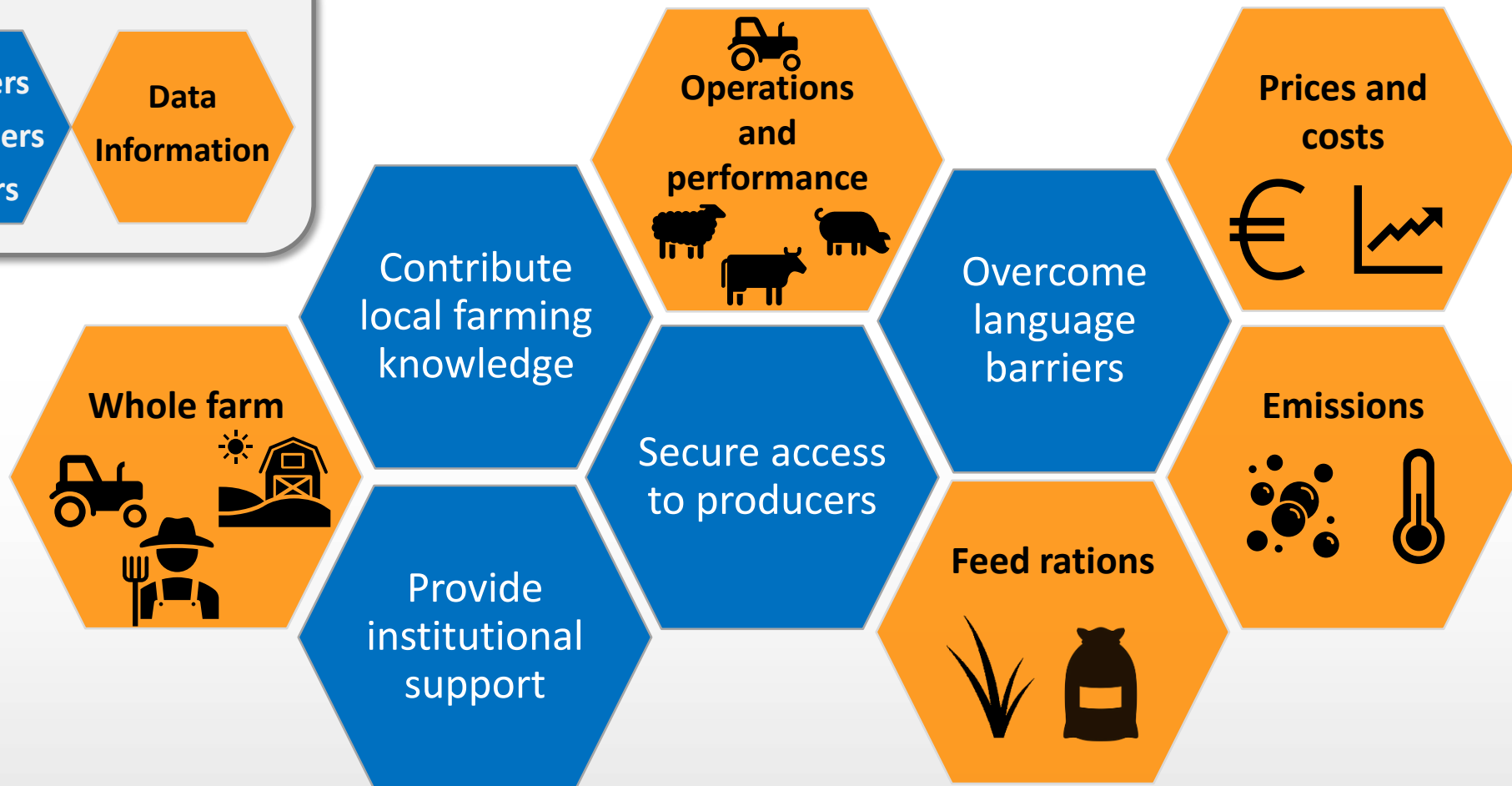
Update data
LOCAL SCIENTISTS, ADVISERS, FARMERS

We bring people and their expertise together and create detailed and comprehensive data sets

Legend

Producers
Researchers
Advisors

Data
Information



We are working on an annual schedule.

New partners
joining anytime



Trainings
Dec-Feb



Data
collection
and update
Feb-May



Permanently



Projects using
existing and
generating new data
and expertise



Further
development of
tools and methods

Reports
Oct-Nov



Data
bases
Oct

Conference
Jun



Our clients are from research, governments, industry, (inter)national organisations and NGOs.



Federal Ministry
of Food
and Agriculture



Agriculture and
Agri-Food Canada



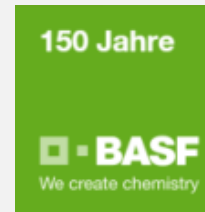
I I A S A



JOHN DEERE

McKinsey & Company

giz Deutsche Gesellschaft
für Internationale
Zusammenarbeit (GIZ) GmbH



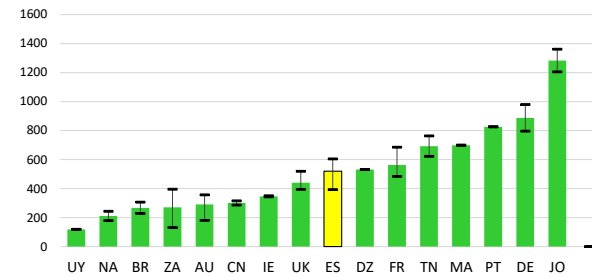
Main outputs.

Global farm comparisons and benchmarking

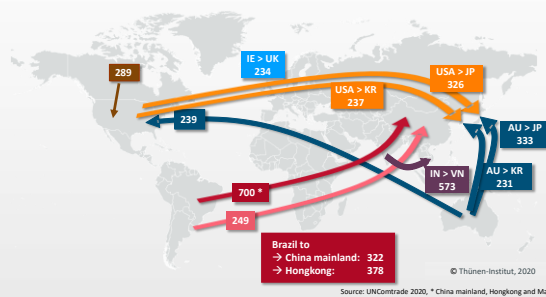
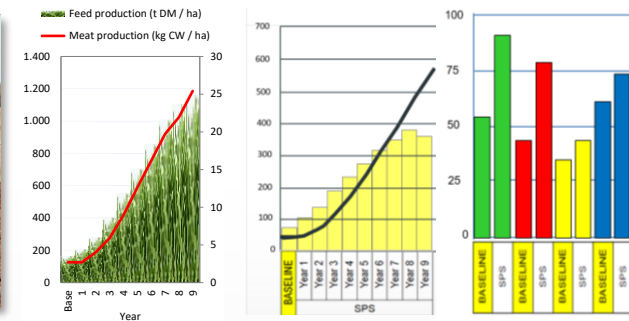
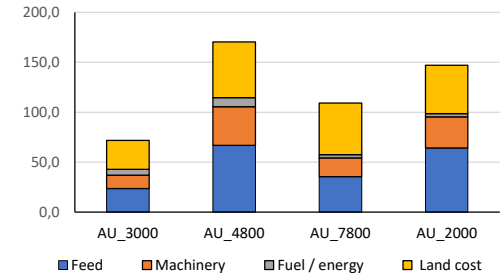
Projects on competitiveness Projects on practice change in the context of sustainability

Sector data on global and national level (inventories, production, consumption, prices, trade)

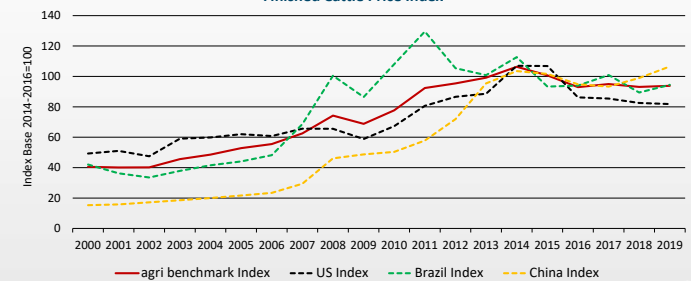
US\$ / 100 kg LW



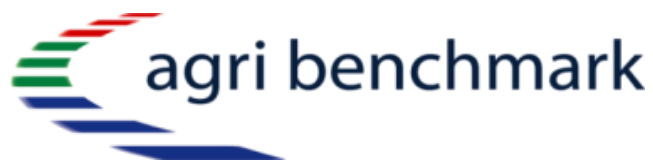
Feed costs



Finished Cattle Price Index



agri benchmark – passionate about facts.



Follow us on



Dr. Claus Deblitz

Thünen Institute of Farm Economics
Bundesallee 63
38116 Braunschweig

Tel.: +49-531-596-5141
Fax: +49-531-596-5199
E-mail: claus.deblitz@thuenen.de
Internet: www.agribenchmark.org
www.thuenen.de/en/bw/

Watch this PPT as a movie on our website: <http://www.agribenchmark.org/agri-benchmark/who-we-are.html>