



Grassland and Savannah Conservation and Management – Policies and Practical Approaches

## The Colombian Orinoquia, Lessons Learned from the field

***Sofía Rincón***

*Orinoquia Ecoregional Coordinator – WWF Colombia*

*September 29, 2020*



## A person wearing a light-colored shirt and a hat is riding a dark horse through tall, green grass. The horse is in motion, and the rider is holding the reins. The background is a bright, overcast sky.



- **42,17% in savannas**
- High biodiverse, and culturally rich area. hydrologically,
- Least represented in the National System of Protected Areas: 4%



# Orinoquia: Different sub-landscapes

Flooded savannas



Riparian forest and  
Flooded forest



Highland  
savannas

Transitional forest





# Orinoquia: Iconic species





# Orinoquia: Drivers of change



The main drivers of change in the region are:

- » Extractive activities
- » Unsustainable land-use change
- » The expansion of the agricultural frontier
- » Climate change
- » Loss of biodiversity and ecosystem services





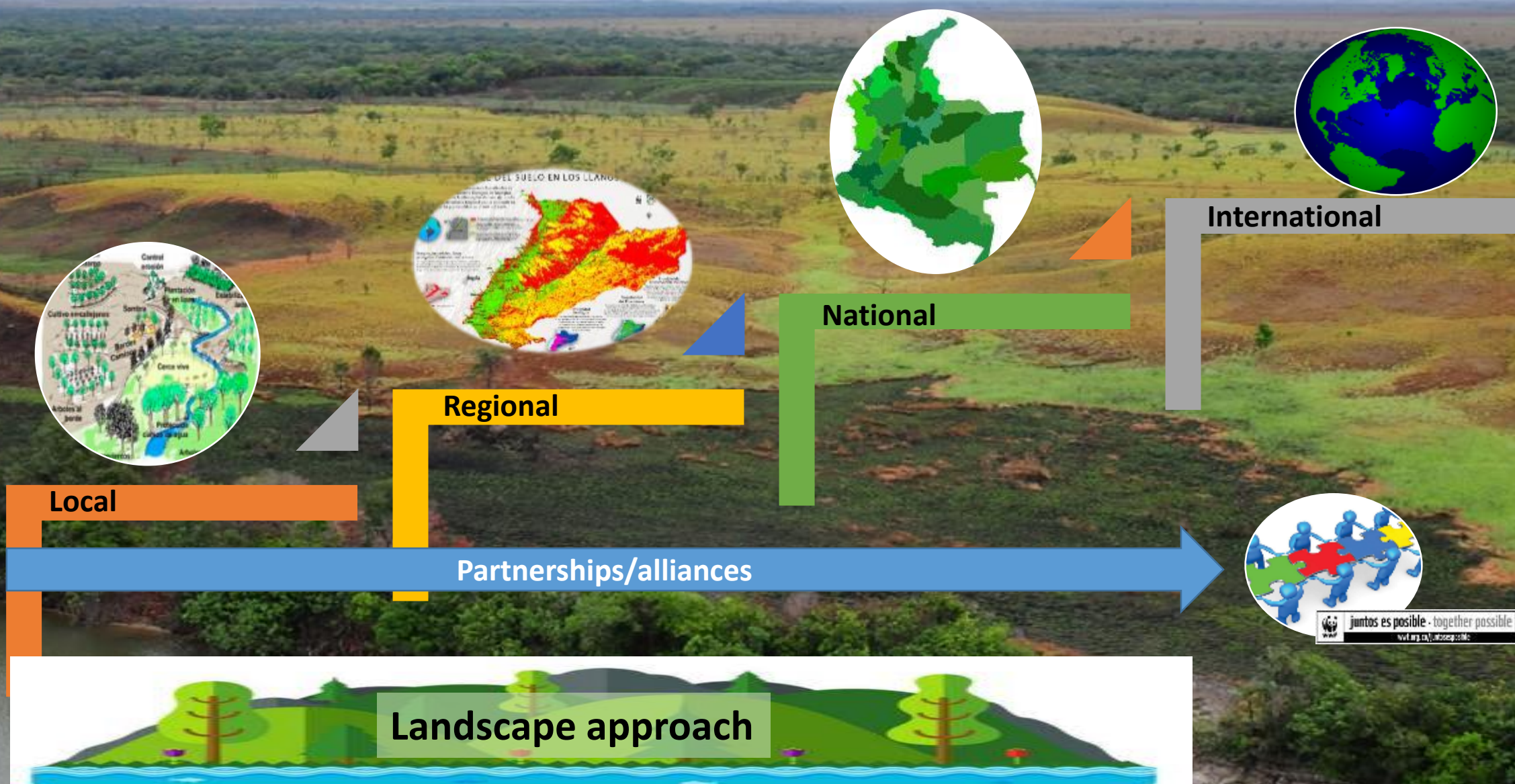
# WWF conservation response: complementary approaches/perspectives:

- ✓ Strategic perspective
- ✓ Landscape approach
- ✓ Multiscale
- ✓ Multi-stakeholder





# WWF conservation response: complementary approaches





# WWF conservation response: complementary approaches, multiscale, participatory



- ✓ *Provide technical support to decisions makers (information and tools on biodiversity and climate change) : land use planning, Protected Areas, Species and habitats conservation, Low Carbon and conservation-production BMPs, deforestation and conversion free supply chains.*
- ✓ *Advocacy, strengthening of institutional and regulatory frameworks; social inclusion, support to multi-stakeholder platforms and facilitation of dialogue among key stakeholders*
- ✓ *Sustainable finance and markets*





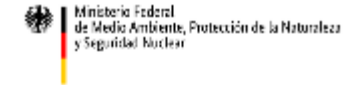
# SULU

## LAND USE CHANGE IN SAVANNAHS AND GRASSLANDS

APPROACHES BY POLICY ENGAGEMENT, LAND USE PLANNING  
AND BEST MANAGEMENT PRACTICES



Fomentado por el:



en virtud de una resolución del Parlamento  
de la República Federal de Alemania

### Outputs

01

Land use methods  
strengthened,  
new information,  
new indicators

02

Institutional and  
multistakeholder  
platform capacity  
building

03

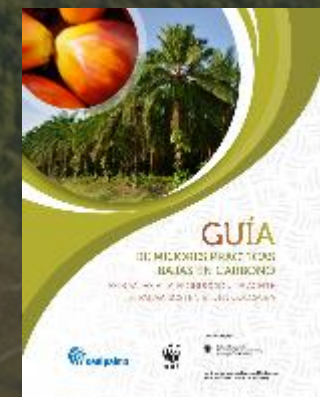
Low carbon BMPs  
Conservation-  
production model

05

Savannahs  
ecosystems  
positioned

04

Sustainable  
Finance

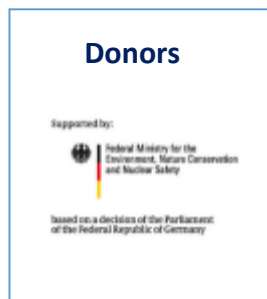
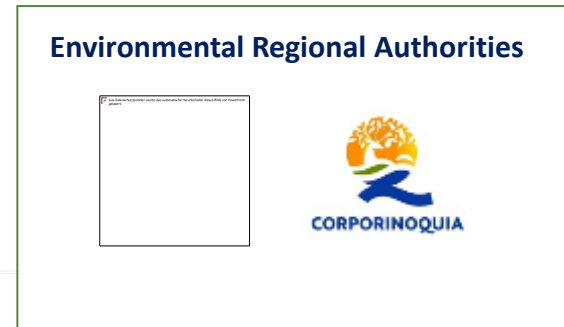


### Orinoquia Integrated Landscape Program - OIL





# Many stakeholders + multiple initiatives + MSP





# SULU

LAND USE CHANGE IN  
SAVANNAHS AND  
GRASSLANDS

APPROACHES BY POLICY ENGAGEMENT, LAND USE PLANNING  
AND BEST MANAGEMENT PRACTICES



COLOMBIA

Fomentado por el:



Ministerio Federal  
de Medio Ambiente, Protección de la Naturaleza  
y Seguridad Nuclear

en virtud de una resolución del Parlamento  
de la República Federal de Alemania

## Videos

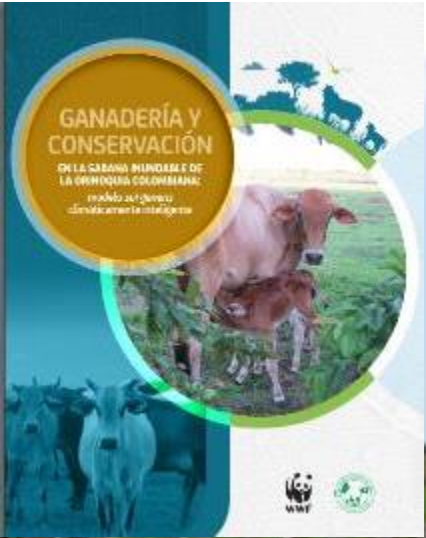
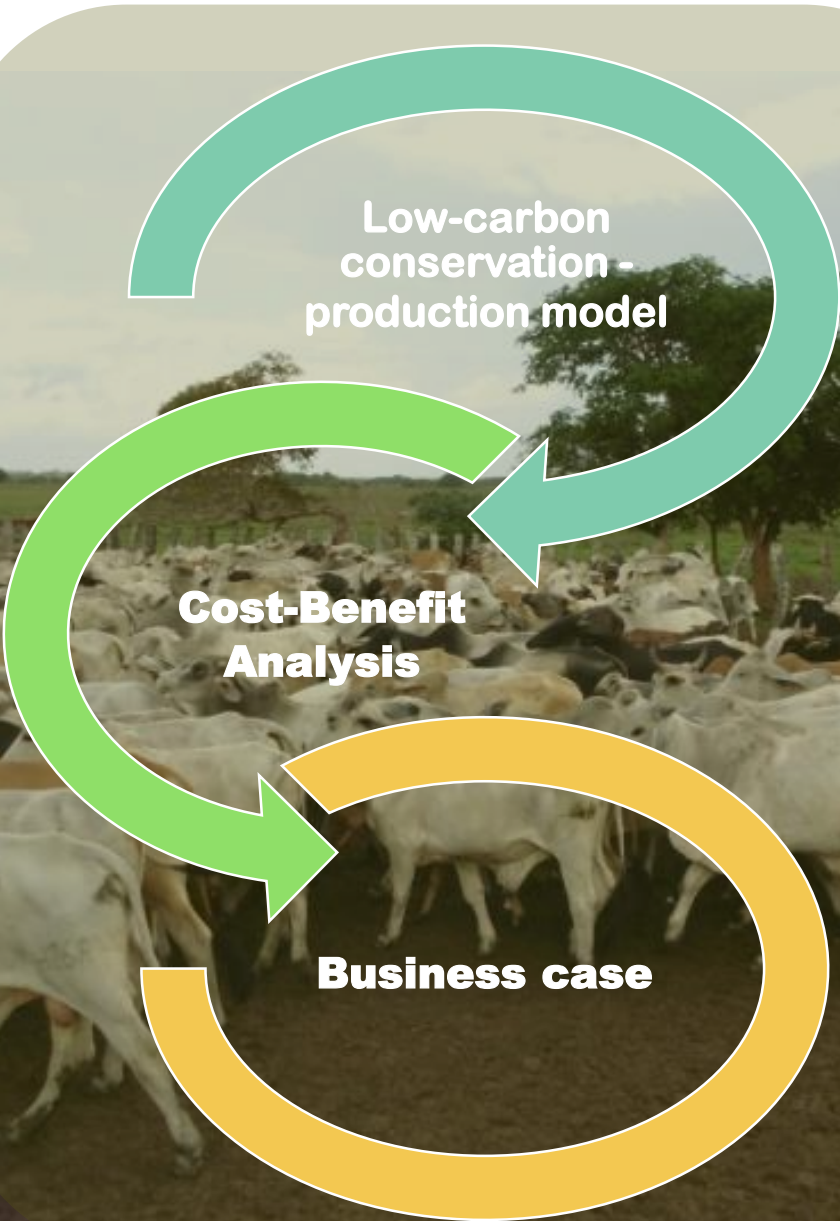


Savannas Module  
for existing  
E-learning platform





# Cattle ranching in flooded savannahs: A low-carbon conservation - production model





# Casanare floodplains in Orinoquia, eastern Colombia

**SULU** LAND USE CHANGE IN  
SAVANNAHS AND GRASSLANDS  
APPROACHES BY POLICY ENGAGEMENT, LAND USE PLANNING AND BEST MANAGEMENT PRACTICES



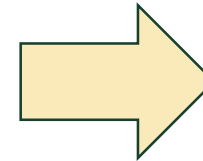
**Exchange of experiences between producers from  
Colombia and Paraguay**



- ❑ The harmonic implementation of the international commitments in the territories, according to its context and needs



Convention on  
Biological Diversity



## Policy advocacy



### Orinoquia Integrated Landscape Program - OSIL



- ❑ The “triple challenge” and tackling trade-offs between climate, food and biodiversity goals: Orinoquia Region

- ❑ Deforestation/conversion-free supply chains







# Thank you!

*Sofía Rincón*

*Orinoquia Ecoregional Coordinator – WWF Colombia*  
*sarincon@wwf.org.co*

# SULU

LAND USE CHANGE IN  
SAVANNAHS AND  
GRASSLANDS

APPROACHES BY POLICY ENGAGEMENT, LAND USE PLANNING  
AND BEST MANAGEMENT PRACTICES