



Federal Ministry for the
Environment, Nature Conservation,
Building and Nuclear Safety

Land Use Change in Savannahs and Grasslands. Approaches by Policy Engagement, Land Use Management and Zoning and Best Management Practices

(Sustainable Land Use – SuLu)

**Sonia Delphin
Raul Rivarola
Fabianus Fliervoet**

WWF-Paraguay

September - 2017

Photo description: Typical landscape in the Paraguayan Pantanal

Content

- Paraguay context
- WWF-Paraguay Chaco-Pantanal Program
- The SuLu Project
- Why the Pantanal is important?
- Project accomplishments
- What do we expect?

Paraguay Context

Paraguay focuses its work on **land use planning and zoning**, increasing efficiency of **agriculture and cattle practices**, and GHG **emissions reduction** (NDCs, 2015)

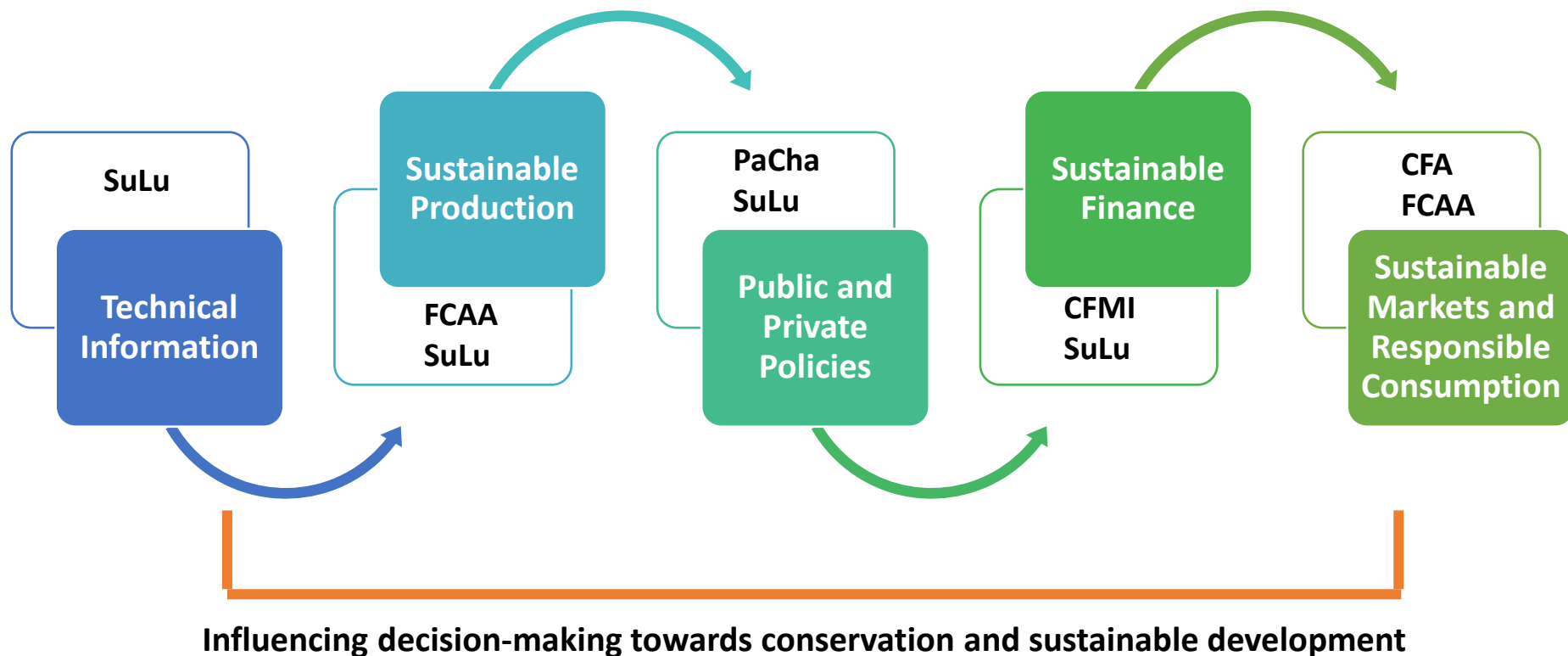
94% of the GHG emissions come from the land use and forestry category (SEAM, 2011)

There is a commitment in the country to **reduce deforestation and GHG emissions** through different strategies.



https://www.worldskills.org/packages/worldskills_org/images/location_map/PY_location_map.gif

WWF-Paraguay Chaco-Pantanal Program



Acronym	Project Name	Scope	Donors
CFA	Collaboration for Forest and Agriculture	Chaco	Moore Foundation
CFMI	Conservation Financial Markets Initiative	National	Moore Foundation
FCAA	Forest Conservation Agriculture Alliance	Chaco	USAID
PaCha	Share Resources Joint Solutions – Pantanal Chaco	Pantanal-Chaco	Ministry of Foreign Affairs NL
SuLu	Sustainable Land Use	Pantanal and buffer area	BMUB/IKI



Rhamphastos toco



Pteronura brasiliensis

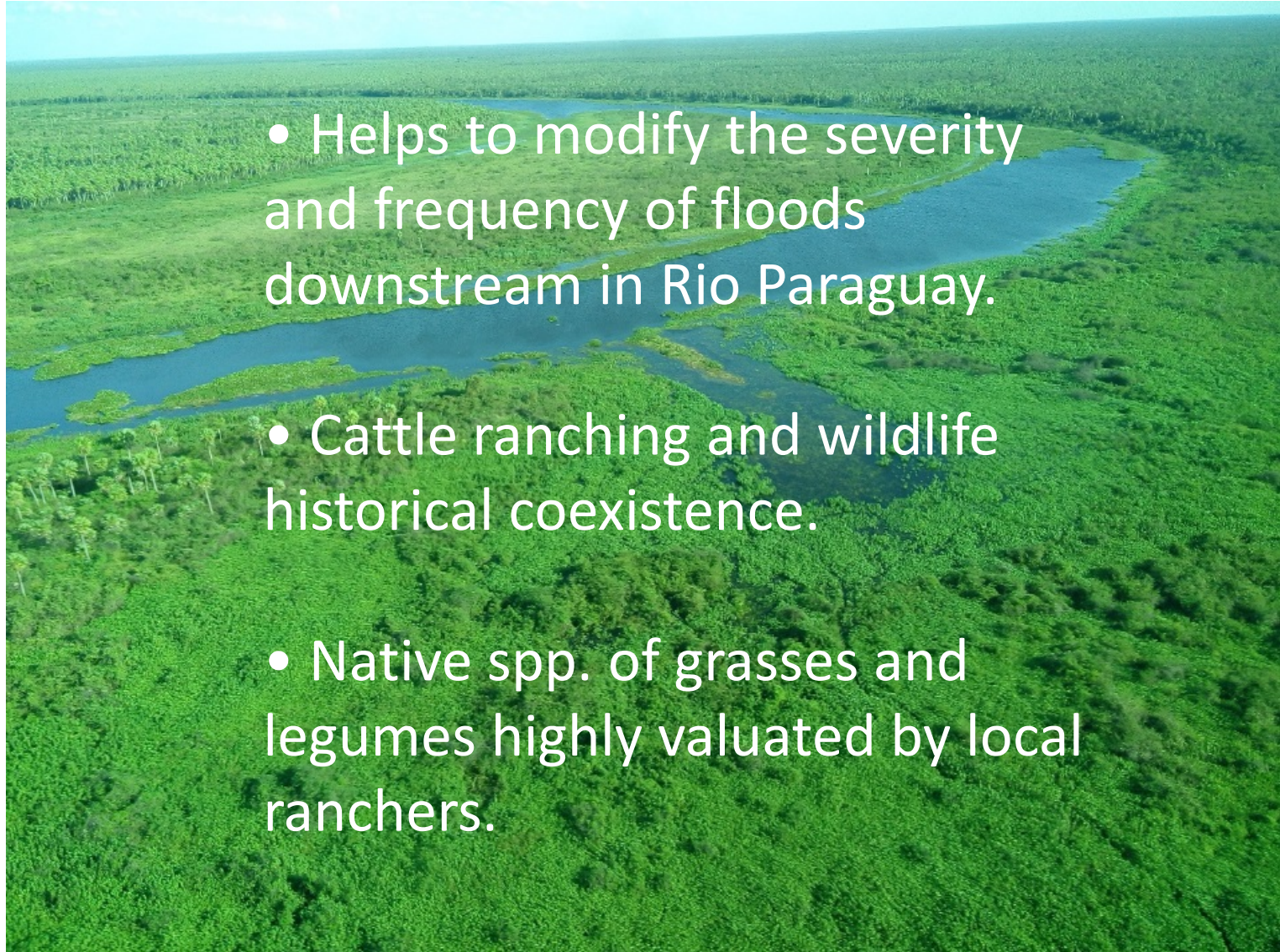


1/11/2017

Psarocolius decumanus

The SuLu Project in Paraguay

Why the Pantanal is important?



- Helps to modify the severity and frequency of floods downstream in Rio Paraguay.
- Cattle ranching and wildlife historical coexistence.
- Native spp. of grasses and legumes highly valued by local ranchers.



Federal Ministry for the
Environment, Nature Conservation,
Building and Nuclear Safety

Project Accomplishments

September 2016 – August 2017



Multi-stakeholder platform established to develop Climate-Smart
Land Use Planning for Bahia Negra District

Land Use Planning **assessment** for the Bahia Negra District
completed (Cost-Share PaCha)

Joint development of **LUP methodology agreed**

Capacities of **national authorities** on climate-smart
strengthened





Federal Ministry for the
Environment, Nature Conservation,
Building and Nuclear Safety

Data Generation



LULC 2016 | SULU-Project area (PY)

Land cover 2016

- Hydrophilic Forest
- Dry Forest
- Agricultural fields
- Savannas and Shrublands
- Flooded Savannas
- Marshland
- Wetland (temporary flooded)
- Waterbodies
- Urban area

0 25 50 75 100 km



Supported by:
Federal Ministry for the Environment, Nature Conservation, Building and Nuclear Safety
Based on a decision of the German Bundestag



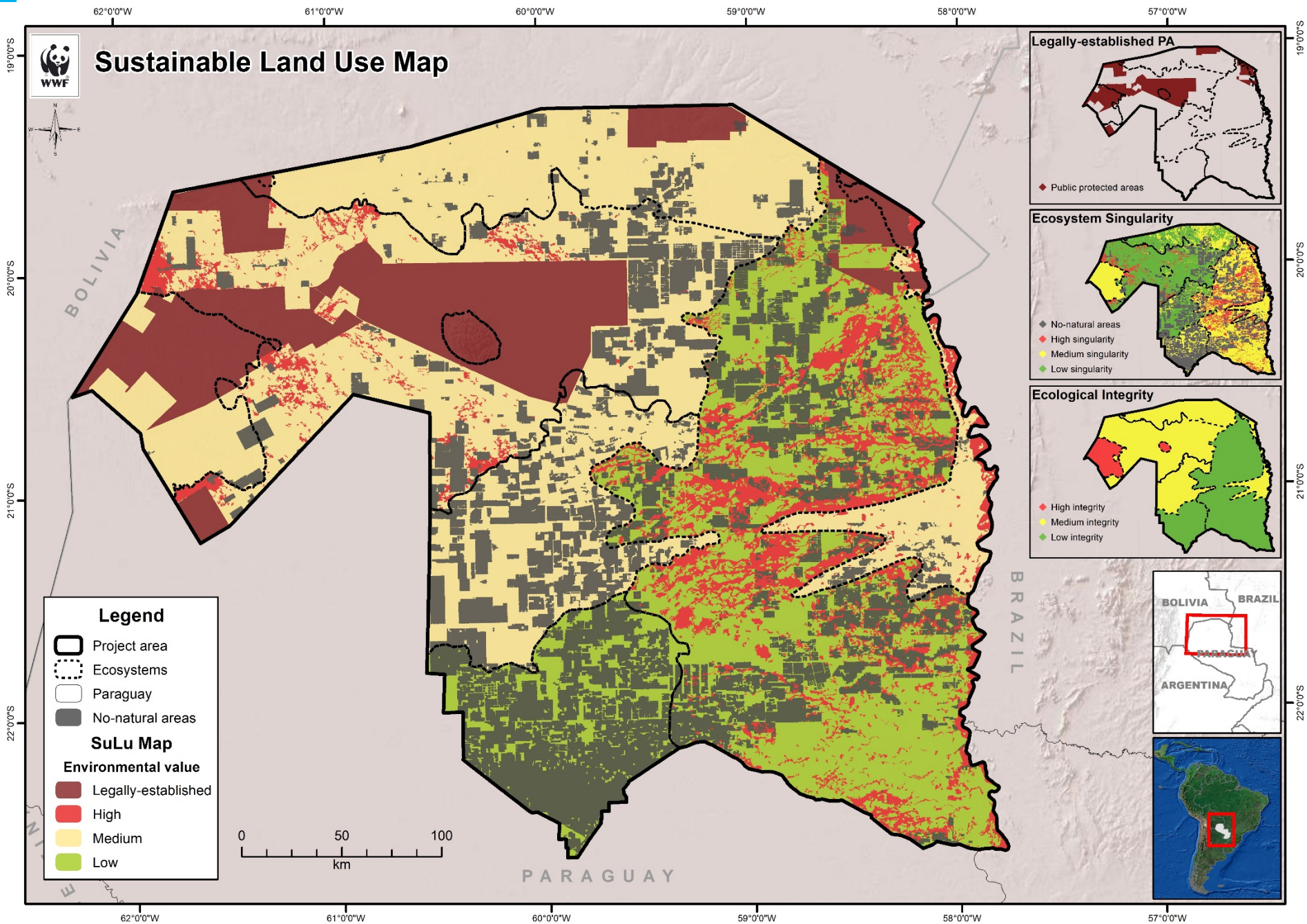
Datasets

LANDSAT 8 OLI (USGS) - Arable land, forest, savanna & other natural fields
Sentinel 1 (ESA/Copernicus) - Waterbodies & flooded areas
Global-Urban-Footprint GUF (DLR) - Built-up areas





First draft of **land use and land cover map** for project Region **completed** and **two workshops** with national authorities to validate data **conducted** (DLR)





Federal Ministry for the
Environment, Nature Conservation,
Building and Nuclear Safety

Capacity building of partners and national authorities

BIENVENIDOS A BAHIA NEGRA





Sustainable Production



Selection criteria for project pilots defined

1. Native grassland and/or savannahs with no introduction of exotic species.
2. Native grassland with *Copernicia alba*
3. High Conservation Value area
4. Extensive cow-calf system in native grasslands and/or savannas with islands of forest.
5. Landowner willingness to implement Climate-Smart best management practices.

What we expect?

Cost/Benefit Analysis

Two workshops conducted:

1. Define baseline scenarios
2. Characterize beef and soy production in Pantanal and surrounding areas
 - Beef workshop: 25 participants including small, medium, and large producers
 - Soy workshop: 7 producers
 - Cost information compiled



Soy Production and Cattle Ranching in project region characterized



Soy Production

- Soy production is very incipient in the Project region.
- Some varieties are been tested in the buffer zone of Pantanal.
- Soy is a supplementary activity to Cattle Ranching.
- Crop rotation with sorghum and maize.
- Production: 1,600 – 2,000 kg/ha approx.

Soy Production and Cattle Ranching in project region characterized

Cattle Ranching



- Small, medium and large producers exist in the region.
- In the region a typical farm has 10,000 hectares (medium).
- Cattle breeding takes place on the savannahs.
- The Beef finishing operation is normally performed in the improved pastures.

Finance Sector



Roundtable for Sustainable Finance

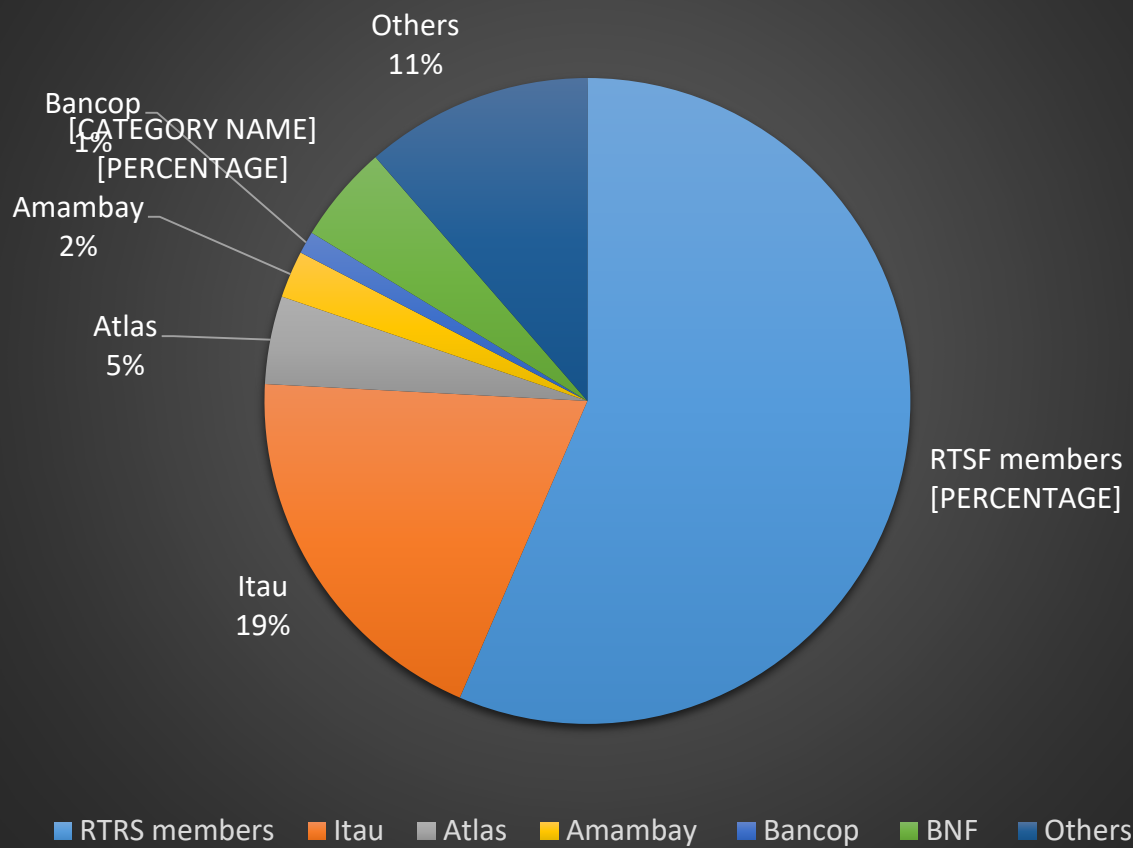
Founding members:



Potential members:



Cattle sector loan portfolio in the financial system



Communications



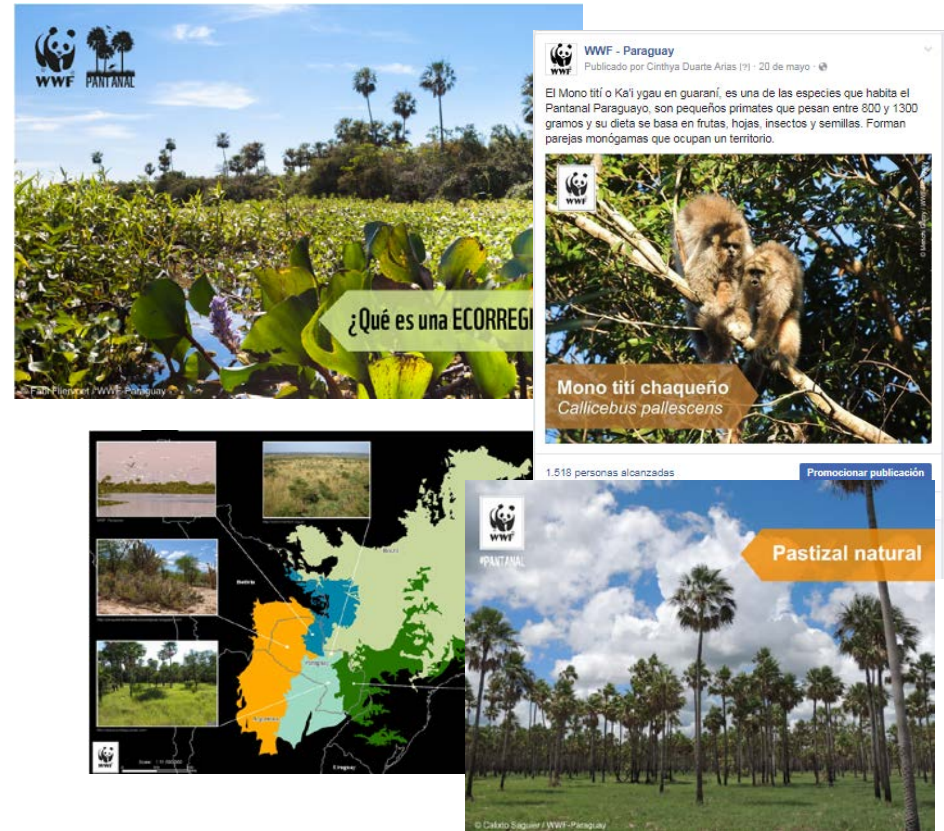
DIGITAL MEDIA

16

Publications in social
media

+ 34.570

People reached



DIGITAL MEDIA

1

Online contest
How much do you know
about the Pantanal?

+ 260

Participants in 1 week



MEDIA

5
+ 20.112

Publications in
newspapers and
magazines

People reached



Los tres gigantes del Chaco-Pantanal paraguay

Posteado por WWF - Paraguay el 24-07-2017

Hoy queremos destacar a tres animales nativos de nuestro país que merecen especial atención, no solo para celebrar lo maravillosos que son, sino también para recordar que se encuentran amenazados y que todos deberíamos protegerlos como una parte valiosísima de nuestro patrimonio natural.



LA NACIÓN

Martes 5 de septiembre de 2017

Tendencias

La producción debe estar en armonía con la naturaleza



La Especialización en Manejo Holístico se desarrolló del 21 al 24 de febrero en el Carnielitas Center y los días 25 y 26 de febrero hubo actividades en campo dentro de una estancia en Progreso.

26 de febrero



WWF Paraguay apoya y acompaña el día módulo de la Especialización en Manejo

Difunden el manejo holístico como opción productiva



What we expect?

Capacity of **national authorities** and local partners on land use management is **strengthened**.

Climate Smart **Better Management Practices for soy and cattle** are promoted.

Rountable for Sustainable Finance is **strengthened** with the inclusion of more bank institutions. Include social and environmental risks into financing strategies for palm oil, cattle and soy.

Different **stakeholders are informed** about the role of savannah and grassland ecosystems to reduce GHG emissions.

Thanks!
Gracias



Federal Ministry for the
Environment, Nature Conservation,
Building and Nuclear Safety













