



# SULU LAND USE CHANGE IN SAVANNAHS AND GRASSLANDS

APPROACHES BY POLICY ENGAGEMENT, LAND USE PLANNING AND BEST MANAGEMENT PRACTICES

## Project Overview in Colombia

*Sofía A. Rincon B.*

*Sector Policy Specialist - Project Manager*

*Johanna Prüssmann*

*Ecosystem Services and Climate Analyst*

*Camila Cammaert*

*Commodities Policy Specialist*

Supported by:



Federal Ministry for the  
Environment, Nature Conservation  
and Nuclear Safety

based on a decision of the Parliament  
of the Federal Republic of Germany

SULU - Land Use Change in Savannahs and Grasslands

*Berlin, September 2017*





# Content



1. Project Background
2. Project Region
3. Why this project is important for this region?
4. Policy context in the region
5. What has the project accomplished so far?
  1. Outreach strategy: Involved parties-project partners and
  2. by output
6. What the project hopes to accomplish in the future?

# 1. Project Background: WWF CO





# 2. Project Background: Sulu 1



***Balancing spatial planning, sustainable biomass production and conservation: a practical multi-stakeholder approach to spatial planning for climate mitigation - Sulu (Sustainable Land Use) 2011-2014***



Germany  
US  
Colombia  
Brasil  
Indonesia

Supported by:

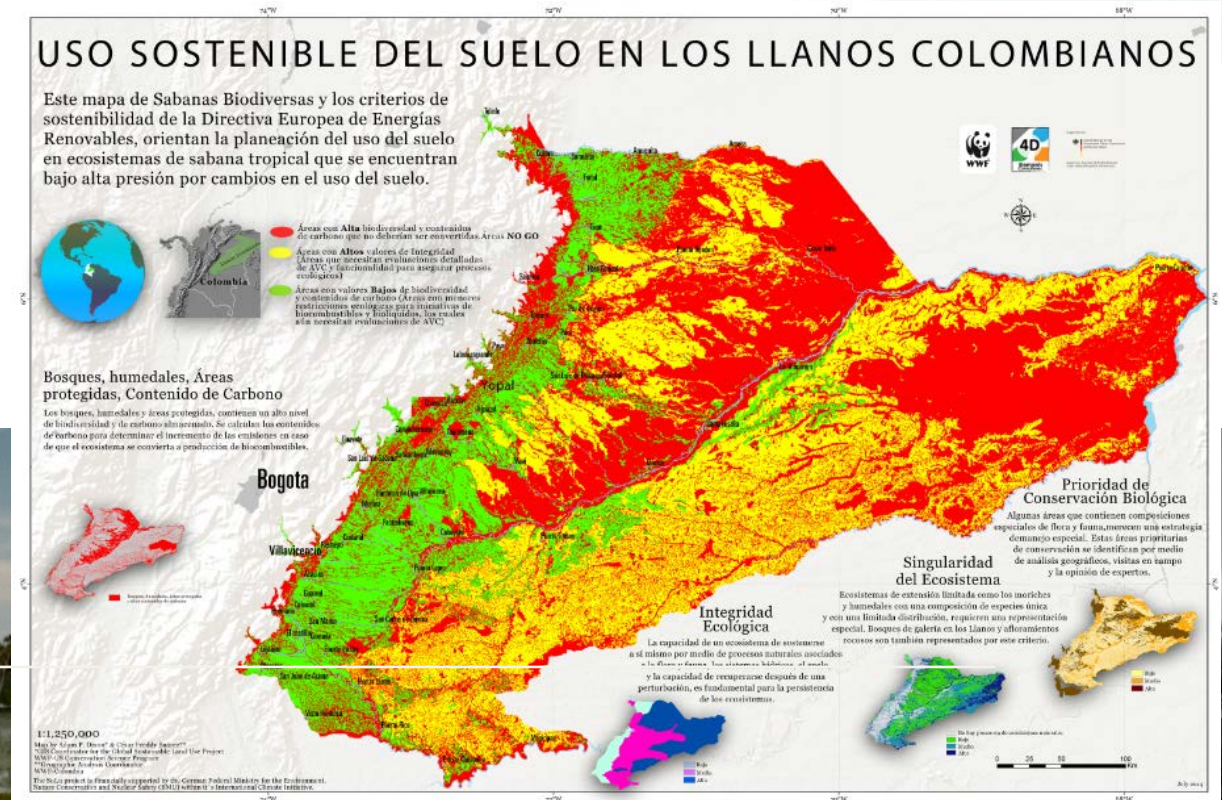


Federal Ministry for the  
Environment, Nature Conservation  
and Nuclear Safety

based on a decision of the Parliament  
of the Federal Republic of Germany



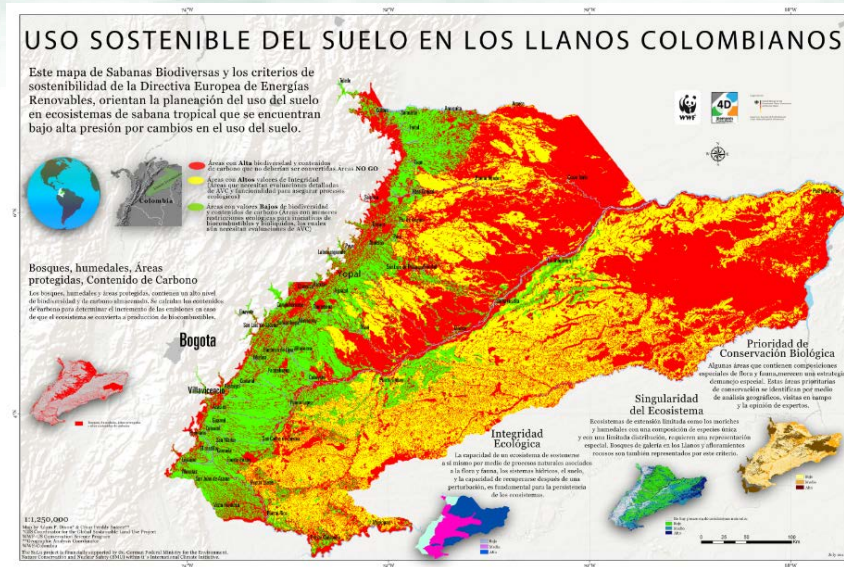
**Goal INT : Reduction of GHG Emissions and loss of biodiversity due to land use change caused by unsustainable biomass production.**



**Goal CO Identification of High Biodiverse Savannahs according to EU-RED**



# 1. Project Background: Sulu 1



Indicative Map,  
based in EU RED  
criteria



Effective  
implementation  
in LUP Instrument

Enabling condition through tools, capacity building,  
strategic partnerships and communications

Supported by:

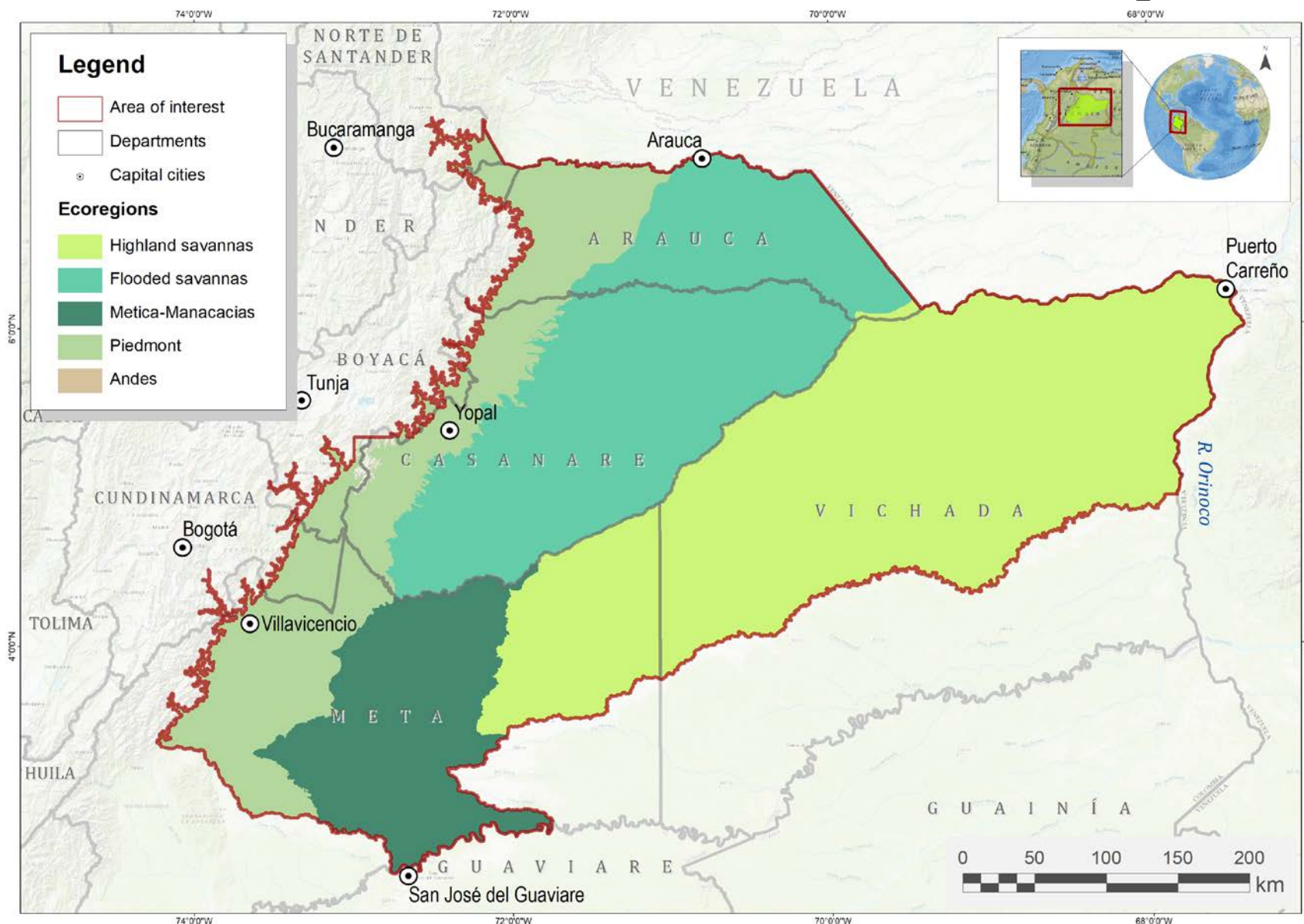


Federal Ministry for the  
Environment, Nature Conservation  
and Nuclear Safety

based on a decision of the Parliament  
of the Federal Republic of Germany



## 2. Project Region





## 2. Project Region: Types of Savannas landscapes

- ✓ Flooded savannahs
- ✓ High-plains savannahs
- ✓ Riparian forest
- ✓ Flooded forest





## 2. Project Region: Interconnected ecosystem assemblies



- High species richness
- With particular functional characteristics and specific ecological dynamics:  
**Ecosystems services based on water and carbon**
- Least represented in the National System of Protected Areas





# 3. Why this project is important for this region?



25 million hectares (22% of the national area)

Significant increase of converted areas after 2008 (almost double)

Rich in water resources and wetlands

40% of the region's area (10.2 million ha) has potential for agriculture, livestock or forestry (according to UPRA)

Promoting significant rural development in the region based on agroindustry, is considered a key point on the Government agenda, particularly in the context of the peace building process.

Peace agreement implementation

34% of AFOLU GHG emissions in Colombia

Big diversity of ecosystems (156 ecosystems)





### 3. Why this project is important for this region?



➔ Very dynamic Policy context:  
A lot is happening!

➔ Very active multi-stakeholders  
platforms



# 4. Policy context in the Orinoco Region



## Orinoco Region Master Plan



- GoC - National Planning Department (DNP)
- First pilot of “*Models of Development and Planning with Regional Foresight*”
- 4 pillars: Productive and Sustainable Development, Water Resources and Environment, Infrastructure and Logistics and Land Planning.
- Process of building: ongoing
- Focused on projects





# 4. Policy context in the Orinoco Region



**BioCarbon Fund**  
Initiative for Sustainable Forest Landscapes

**Orinoquia Integrated  
Landscape Program - OSIL**

Multilateral fund supported by donor governments and managed by the World Bank.

It promotes reducing greenhouse gas emissions from the land sector, from deforestation and forest degradation in developing countries (REDD+), and from sustainable agriculture, as well as smarter land-use planning, policies and practices.

Colombia, one of the countries selected as beneficiaries





**BioCarbon Fund**  
Initiative for Sustainable Forest Landscapes

Upfront funding to support enhancements to the enabling environment.

Emissions reductions that can be purchased with results-based finance.

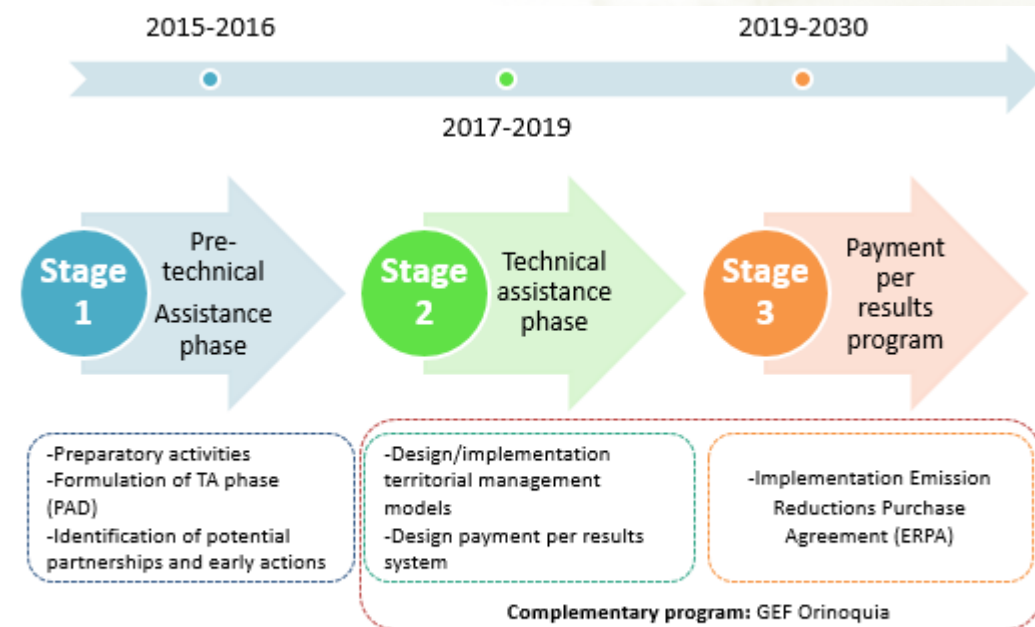


**GLOBAL ENVIRONMENT FACILITY**  
INVESTING IN OUR PLANET

“GEF project - Building Momentum for Sustainable Development through Biodiversity Conservation and Low Carbon Development in the Orinoco Region in Colombia”



## Orinoquia Integrated Landscape Program - OSIL



SULU - Land Use Change in Savannahs and Grasslands



# 4. Policy context in the Orinoco Region

## Regional Node for Climate Change



- ✓ Inter-institutional coordination between National and Regional governments
- ✓ Promote the implementation of the National Policy on Climate change: adaptation and reduction of GHG emissions
- ✓ In strong synergy with regional land use planning and risk management
- ✓ Regional needs and dynamics



# 4. Policy context in the Orinoco Region



## Regional Integrated Climate Change Plan for Orinoquia Region (PRICCO)

Framed into NDCs and National Policy of CC, Pricco aims to integrate climate change and risk of disasters into the planning and implementation process of regional development.

- Identify impacts of climate change on the region
- Set the mitigation and adaptation measures that need to be implemented in the next 20 years. Includes monitoring system
- Capacity building strategy.



SULU

vannahs and Grasslands



# WWF Role in this context



- ✓ Provide technical support (information, tools) to decisions makers
- ✓ Facilitate dialog between key stakeholders
- ✓ Enhance governance
- ✓ Policy influence/advocacy



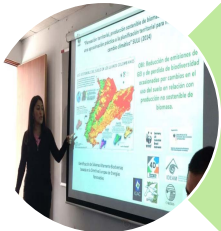


# 5. What has the project accomplished so far?

## Outreach strategy: Involved parties-project partners



**Conducting an outreach strategy** oriented to engage key national and regional stakeholders: those in charge of policy formulation, environmental planning and management, land use planning, production processes, research, etc.



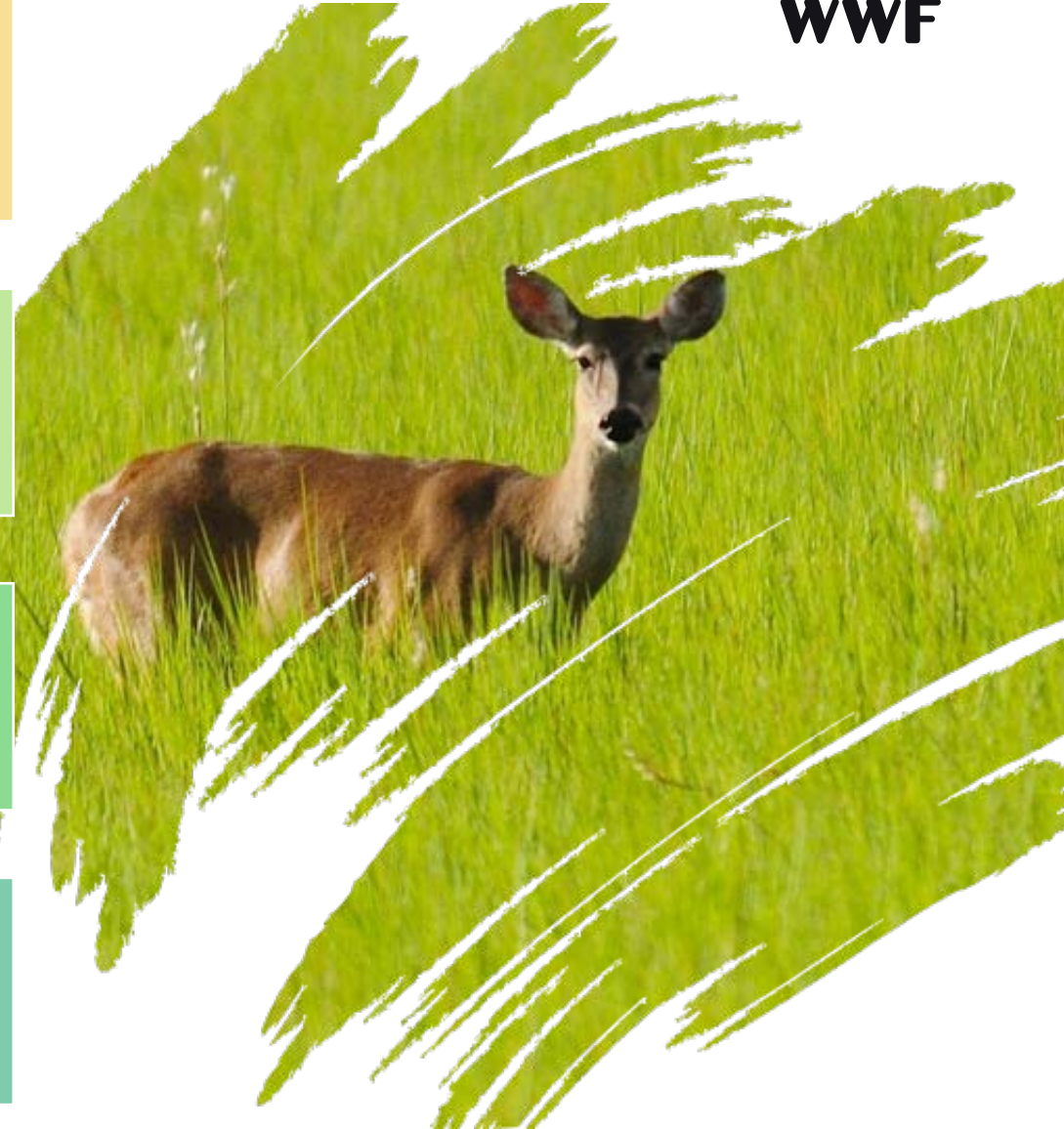
**Aiming** to disseminate the project, identify and agree potential partnerships, and articulate Sulu to ongoing related efforts and dynamics focused on the region.



Besides **facilitating the positioning of the project outputs**, this context approach will leverage government efforts and **enhances planned outcomes**.



Agreements already in place, joint work and technical discussions ongoing, developing and facilitating a participative dialog.



# 5. What has the project accomplished so far?

## Outreach strategy: Involved parties-project partners

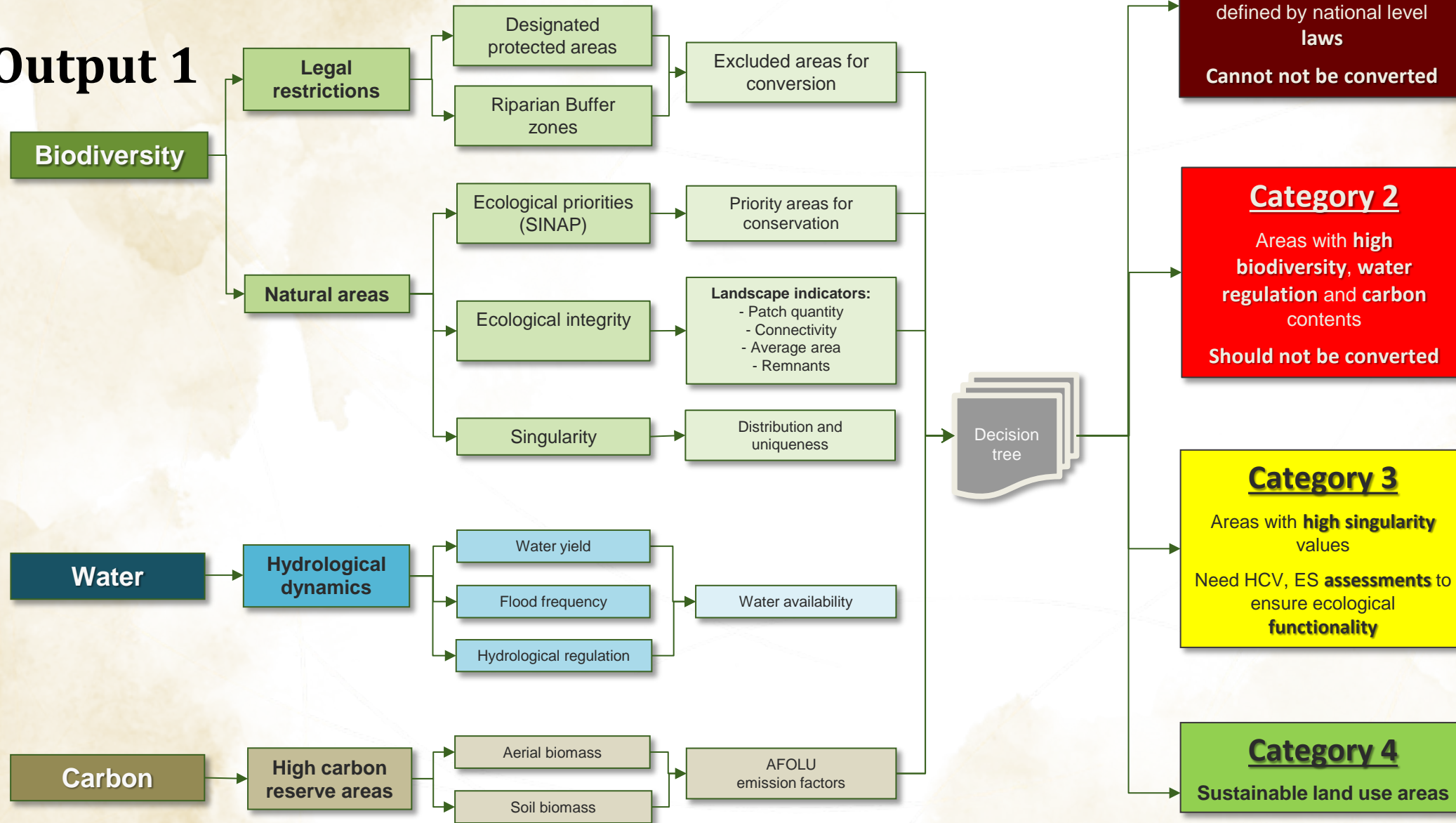




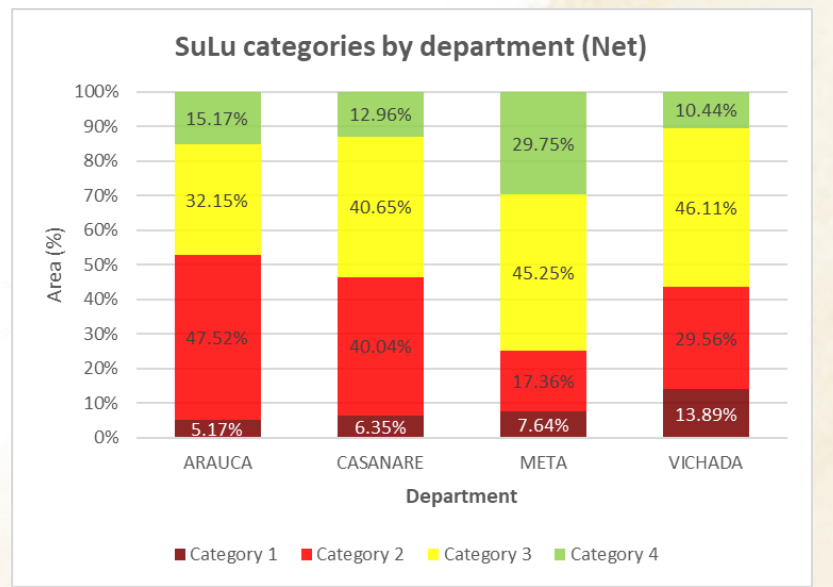
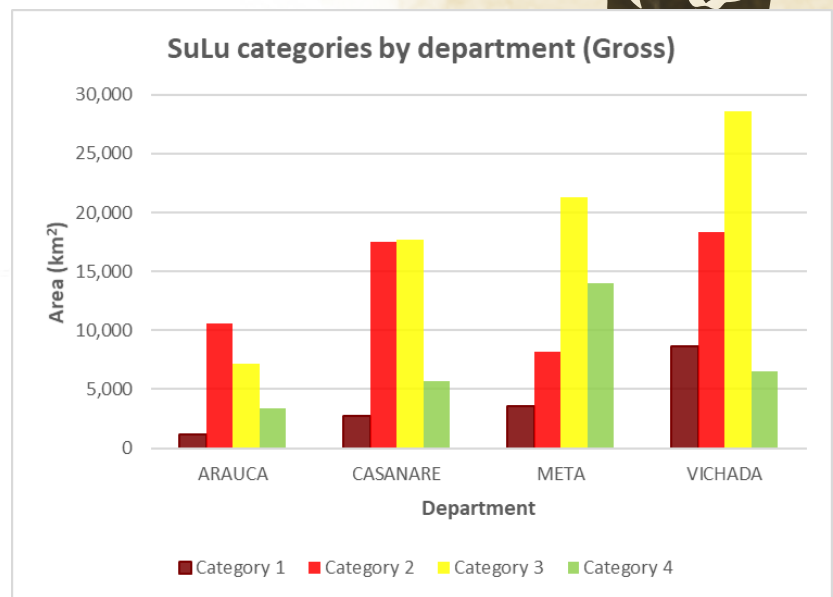
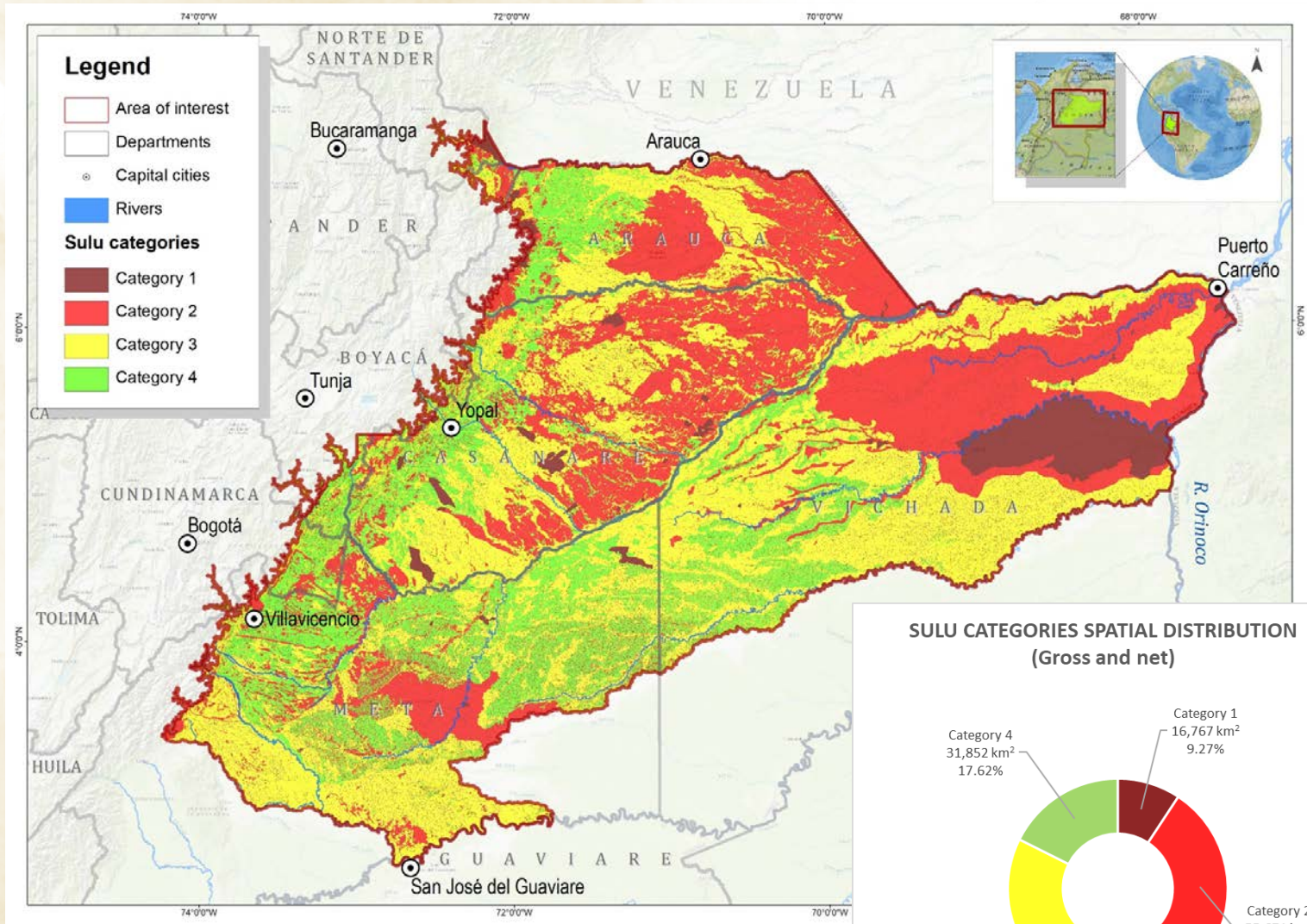
# Conceptual framework



## Output 1



# Mapped results – Spatial distribution



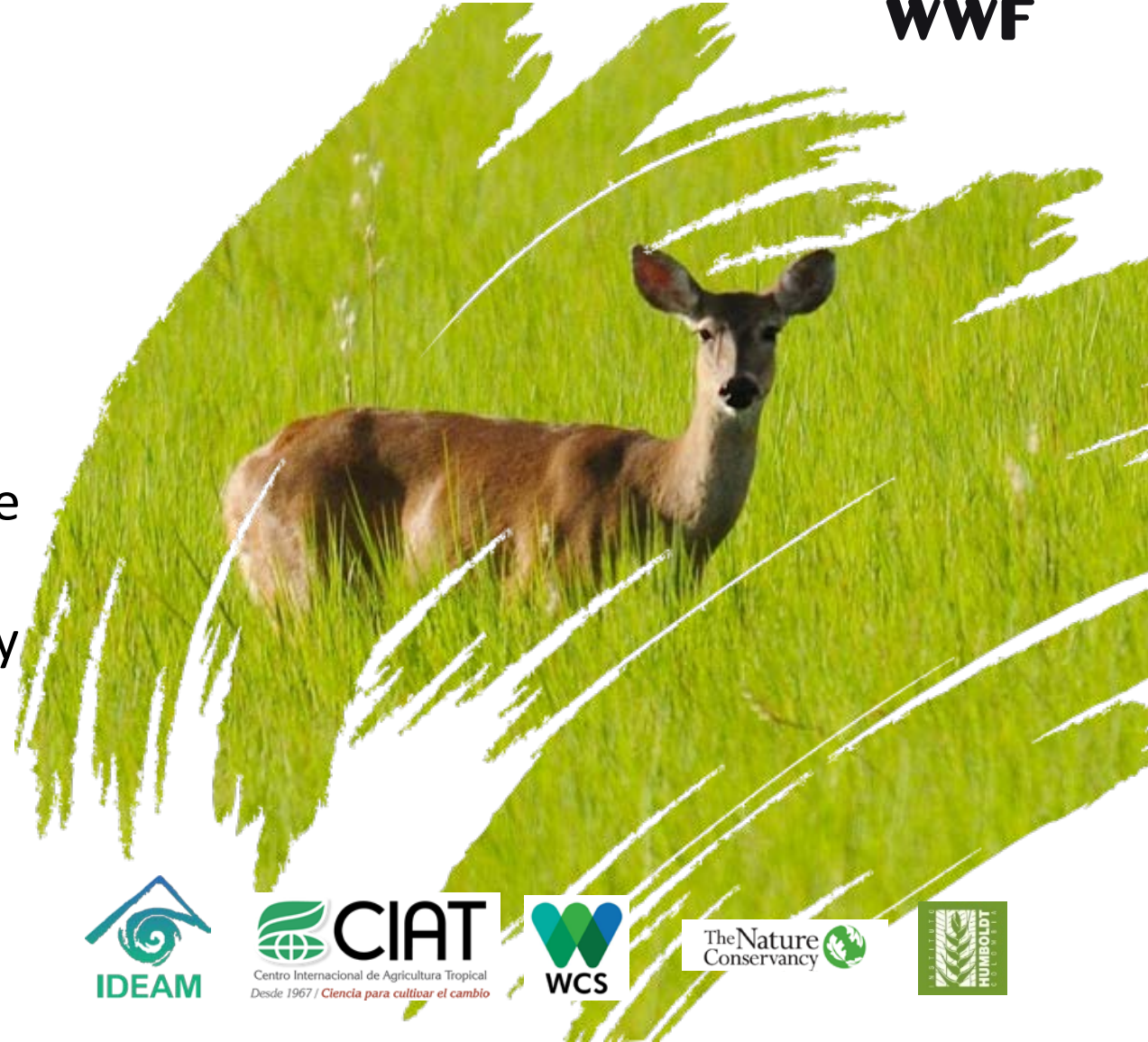


# 5. What has the project accomplished so far?



## Output 1

- ✓ First version of the updated Methodology, including criteria, decision tree and progress on Maps and
- ✓ Draft of Sulu2 Map for pilot region.
- ✓ Team has provided technical assistance to the Biocf program formulation, priority landscapes selection (Sulu ecological integrity analysis as one of the selection criteria),
- ✓ Concrete strategic partnership based on technical synergies and joint work: Ideam, Ciat, IAvH, Snapp (TNC, WCS, Ciat)



# 5. What has the project accomplished so far?



## Output 2

MoU - Strategic partnership with the NORECCO in order to jointly implement capacity building actions.



**Regional Integrated Climate Change Plan for Orinoquia Region (PRICCO)**



# 5. What has the project accomplished so far?



## Output 2

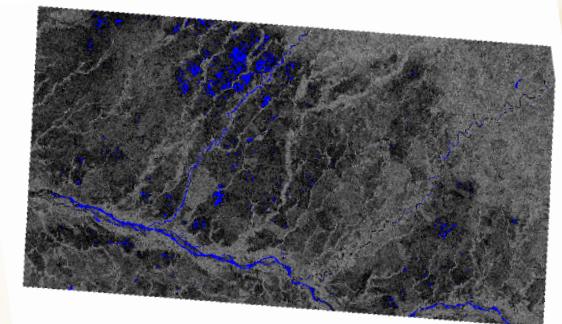
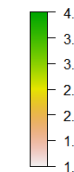
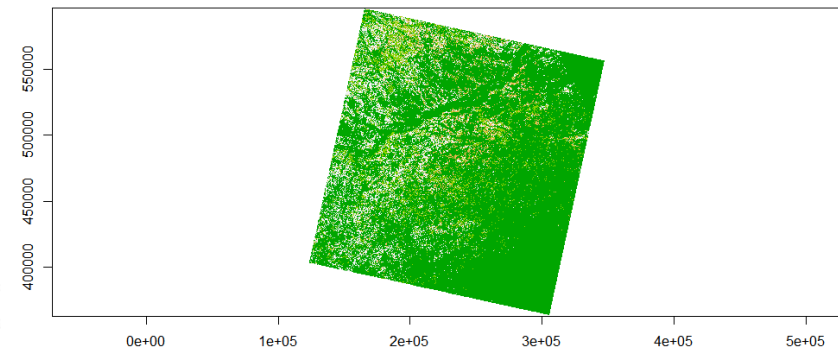
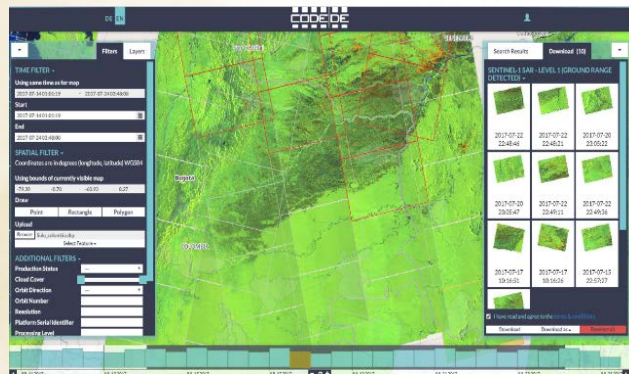
MoU signed with DNP to cooperate developing jointly actions for land use planning “Modern Territorial Plans”



**DNP** Departamento  
Nacional  
de Planeación



# Capacity Building: DLR Remote sensing workshop





# What has the project accomplished so far?

## Output 3



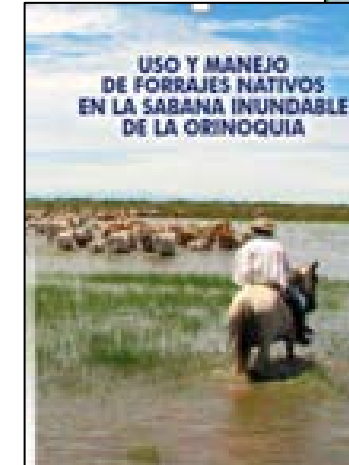
### Cattle ranching in flooded savannas

- Strategic Partnership with FHV
- BMP inventory
- reviewing and discussing the methodology for GHG inventory tool at farm scale,
- Pilot selection



### Palm oil

- Strategic partnership with Cenipalma



# Cost/benefit analysis in Colombia



- ✓ Joint work with Thünen
- ✓ **Support for:** Workshops development, facilitating stakeholders outreach and gathering information.

Cattle ranching



Key Element- Local partners



Oil Palm





# Finance, Making better investment decisions





# We work with actors at different levels

## NATIONAL

1

GoC

Green Protocol

## INSTITUTIONAL

2

Bancolombia

Banco Agrario

Other FI

## LOCAL - Orinoquía

3

Cattle Ranch

Palm



# Institutional: Bancolombia & Banco Agrario



- Agreement since 2012
- Validation of the water risk filter tool
- Identifying next activities



**Banco Agrario  
de Colombia**

- Agreement since 2016
- Workplan established



# We work with actors at different levels

## NATIONAL

1

GoC

Green Protocol

## INSTITUTIONAL

2

Bancolombia

Banco Agrario

Other FI

## LOCAL - Orinoquía

3

Cattle Ranch

Palm



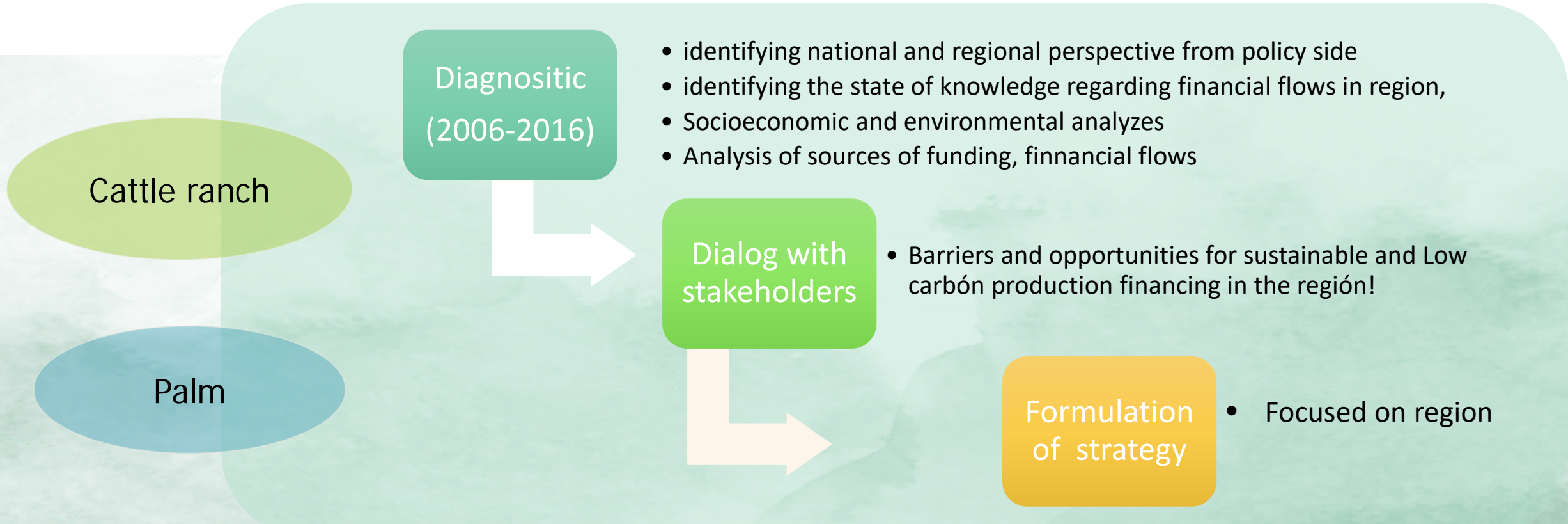


# Local: Cattle ranch and palm in the Orinoco



## Output 4

Advances at National level, but developing actions with regional approach is needed.



# What has the project accomplished so far



- ✓ To highlight Orinocos high biodiversity values and its strategic importance in sustainable development, a digital strategy has been developed. The main message is to confront the audience with their own knowledge and perceptions about the region.
- ✓ The activities included the production of several videos, the engagement through social media and the design of a landing page [www.quesabesdelorinoco.com](http://www.quesabesdelorinoco.com).



SULU - Land Use Change in Savannahs and Grasslands

We expect to identify more relevant stories to represent the regions circumstances. The voices of Orinocos people are not being heard enough in the public agenda in Colombia, and storytelling is a powerful strategy to build awareness and promote engagement, using different communication channels.

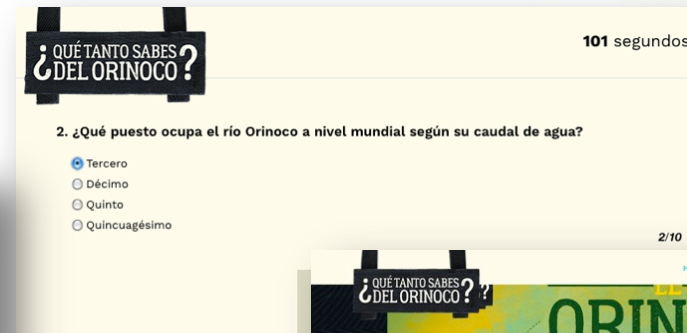




- Webpage



- Social media interaction



## Output 5



- Video production



SULU - Land Use Change in Savannahs and Grasslands



# What the project hopes to accomplish in the future?



- Updated methodology developed jointly with all key actors, and being integrated into main initiatives and decision making processes
- Contribute to capacity of the region for planning holistic and endogenous development
- Propose a feasible, effective and concrete finance tool to be applied in the region
- Positioning Orinoco Savannas as and its strategic importance in sustainable and low carbon development







THANKS

SULU

LAND USE CHANGE IN  
SAVANNAHS AND  
GRASSLANDS

APPROACHES BY POLICY ENGAGEMENT, LAND USE PLANNING  
AND BEST MANAGEMENT PRACTICES